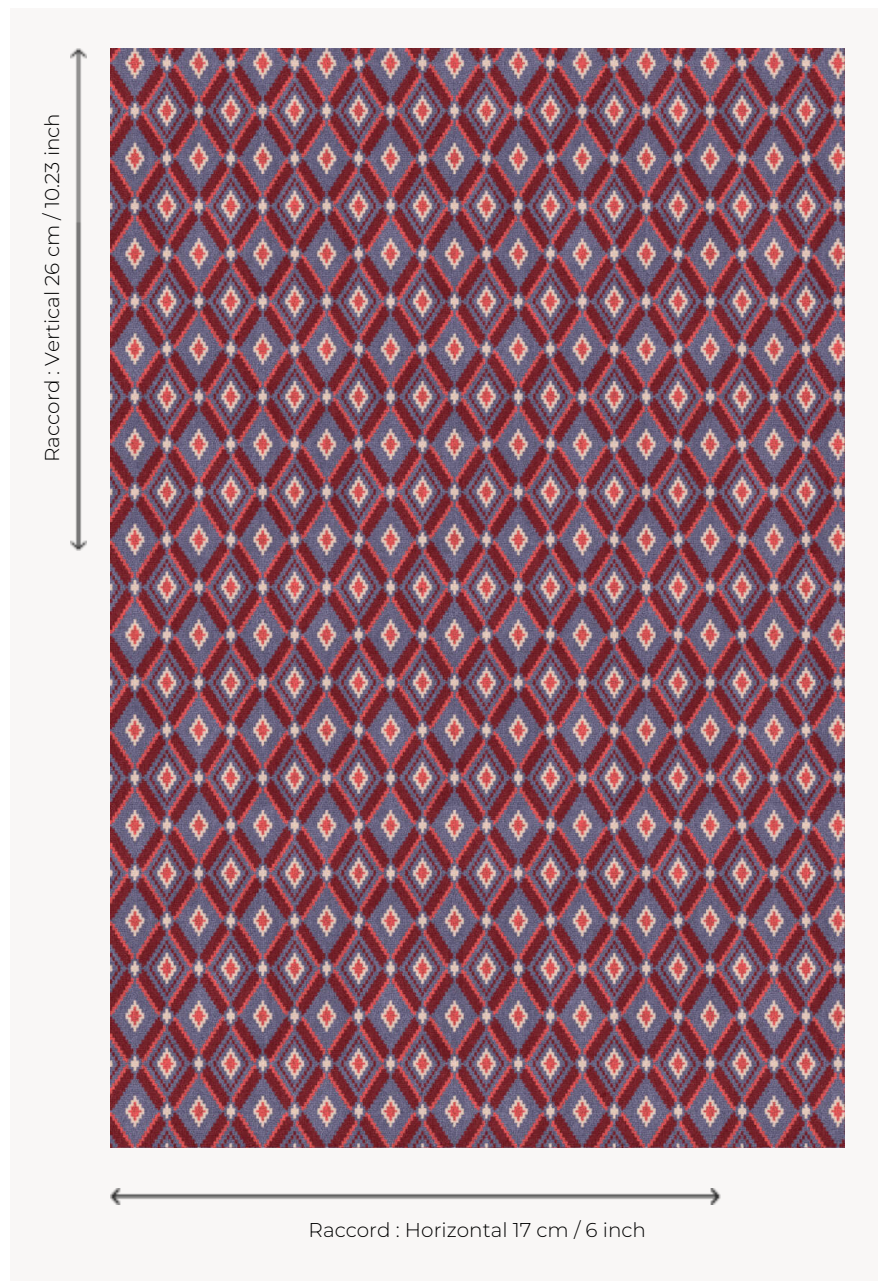


## BT116002 ARISTOTE

Decorative geometric diamonds evoke the fashionable motifs of the late 18th century. This graphic carpet has a matching epingle velvet fabric under the reference B7641.

### BT116002 - Grenat



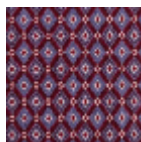
### Braquenié

|                         |  |
|-------------------------|--|
| <b>PERFORMANCE</b>      | TRAFIC INTENSE - NON FEU   |
| <b>FAMILY</b>           | Carpet   |
| <b>TECHNIQUE</b>        | Woven Axminster  |
| <b>USE</b>              | Intensive traffic  |
| <b>COMPOSITION</b>      | 80 % Wool - 20 % Polyamide                                       |
| <b>DENSITY</b>          | 7x10   |
| <b>PILE</b>             | Cut pile   |
| <b>ASPECT</b>           | Mat  |
| <b>REPEAT</b>           | H: 17 cm - 6,00 inch<br>V: 26 cm - 10,23 inch<br>Straight repeat |
| <b>NUMBER OF COLORS</b> | 4  |
| <b>PILE HEIGHT</b>      | 7.30 mm<br>0.29 inch   |
| <b>TOTAL HEIGHT</b>     | 10.00 mm<br>0.39 inch  |
| <b>TOTAL WEIGHT</b>     | 7.06 oz/ft <sup>2</sup>  |
| <b>CERTIFICATIONS</b>   | Passé  |
| <b>NOTES</b>            | Fire retardant<br>Heavy traffic<br>Large width                   |
| <b>INFORMATION</b>      | Production tolerance +/- 3 to 5%<br>Natural peeling              |

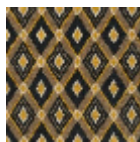
## 3 Colors



BT116001  
Mistral



BT116002  
Grenat



BT116003  
Chataigne