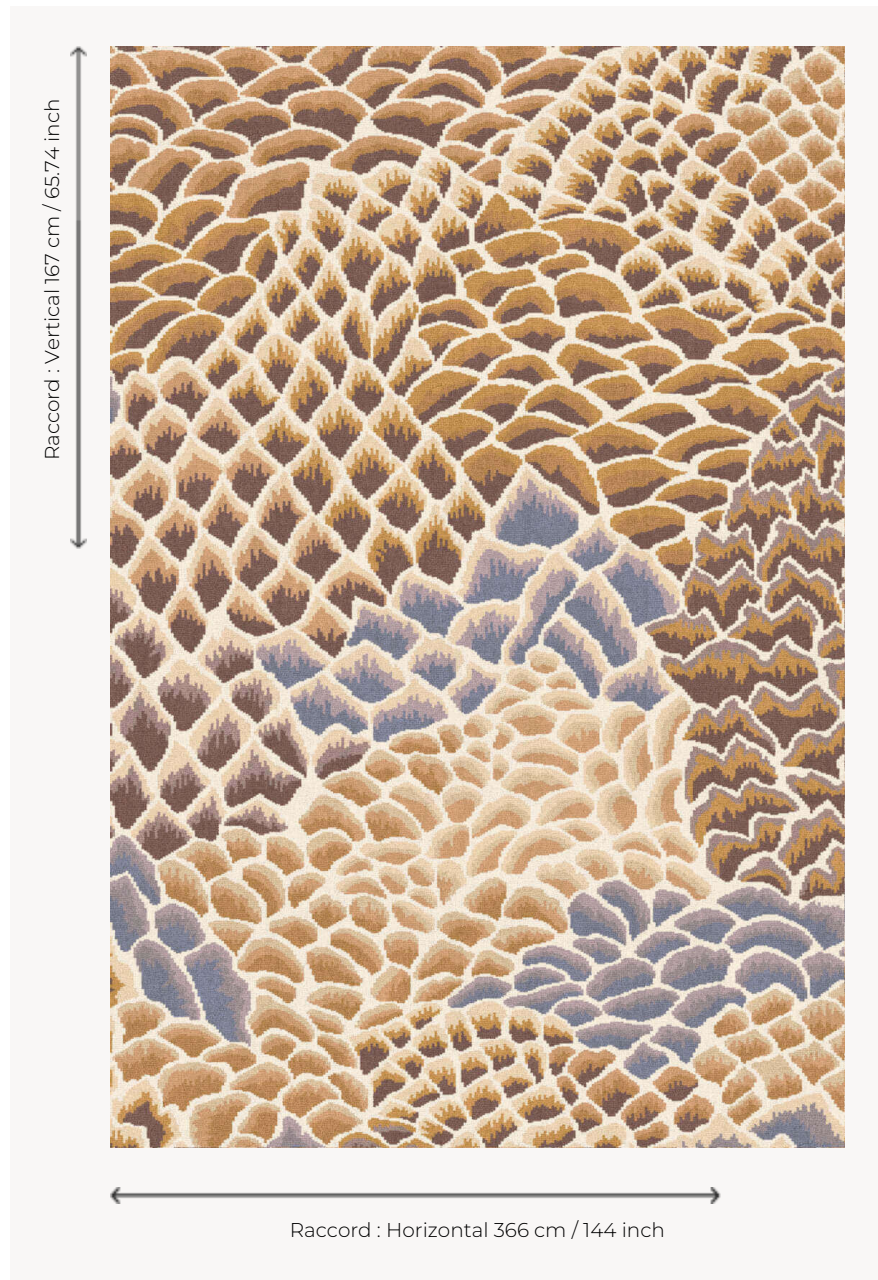


BT118002 LE ROCHER AXMINSTER

This classic of the Braquenié house is reworked in an 11-colored carpet. The pattern taken from the knolls of Indian trees from the 18th century is used here in an all-over pattern that creates breathtaking flooring.

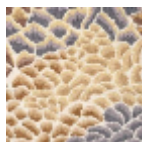
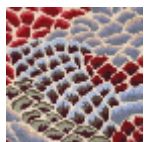
BT118002 - Gingembre



Braquenié

PERFORMANCE	TRAFIC INTENSE - NON FEU
FAMILY	Carpet
TECHNIQUE	Woven Axminster
USE	Intensive traffic
COMPOSITION	80 % Wool - 20 % Polyamide
DENSITY	7x10
PILE	Cut pile
ASPECT	Mat
REPEAT	H: 366 cm - 144,00 inch V: 167 cm - 65,74 inch Straight repeat
NUMBER OF COLORS	11
PILE HEIGHT	7.40 mm 0.29 inch
TOTAL HEIGHT	10.10 mm 0.39 inch
TOTAL WEIGHT	7.18 oz/ft ²
CERTIFICATIONS	Passé
NOTES	Fire retardant Heavy traffic Large width
INFORMATION	Production tolerance +/- 3 to 5% Natural peeling

3 Colors



BT118_AX_0012

BT118001
Grenat

BT118002
Gingembre