

BT130002 CAISSON BOUQUET AXMINSTER

Axminster woven carpet with a coffered pattern, so popular under the Restoration, combining neoclassical elements of roses or plant garlands with flowers.

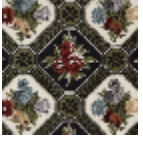
BT130002 - Autumn



Braquenié

PERFORMANCE	TRAFIC INTENSE - NON FEU
FAMILY	Carpet
TECHNIQUE	Fast-Track woven Axminster
USE	Intensive traffic
COMPOSITION	80 % Wool - 20 % Polyamide
DENSITY	7x10
PILE	Cut pile
ASPECT	Mat
REPEAT	H: 66 cm - 25,00 inch V: 33 cm - 12,99 inch Straight repeat
NUMBER OF COLORS	12
PILE HEIGHT	7.40 mm 0.29 inch
TOTAL HEIGHT	10.10 mm 0.39 inch
TOTAL WEIGHT	7.18 oz/ft ²
CERTIFICATIONS	Passé
NOTES	Fire retardant Heavy traffic Large width
INFORMATION	Production tolerance +/- 3 to 5% Natural peeling

1 Colors



BT130002
Autumn