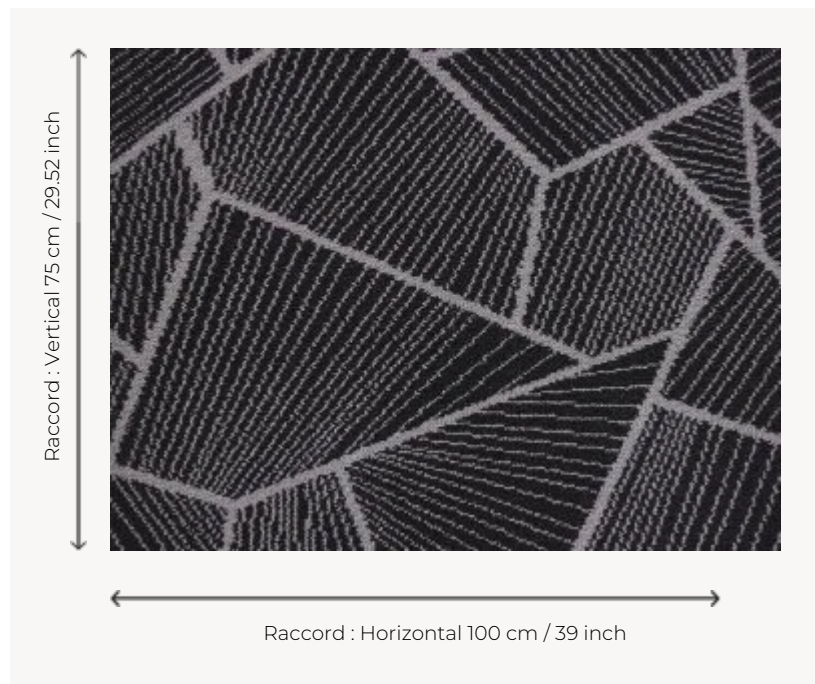


## FT124004 EVENTAIL

Fast-track Axminster woven carpet worked in a broken fan pattern. This iconographic element appears on jewelry and porcelain from the Art Deco period.

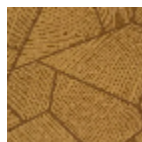
### FT124004 - Noir



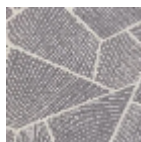
### Pierre Frey

<b>PERFORMANCE</b>	TRAFIC INTENSE - NON FEU
<b>FAMILY</b>	Carpet Rug
<b>TECHNIQUE</b>	Fast-Track woven Axminster
<b>USE</b>	Intensive traffic
<b>COMPOSITION</b>	80 % Wool - 20 % Polyamide
<b>DENSITY</b>	7x10
<b>PILE</b>	Cut pile
<b>ASPECT</b>	Mat
<b>REPEAT</b>	H: 100 cm - 39,00 inch V: 75 cm - 29,52 inch Straight repeat
<b>NUMBER OF COLORS</b>	2
<b>PILE HEIGHT</b>	7.50 mm 0.30 inch
<b>TOTAL HEIGHT</b>	10.20 mm 0.40 inch
<b>TOTAL WEIGHT</b>	7.79 oz/ft <sup>2</sup>
<b>CERTIFICATIONS</b>	Passé
<b>NOTES</b>	Fire retardant Heavy traffic Large width
<b>INFORMATION</b>	Production tolerance +/- 3 to 5% Natural peeling

## 3 Colors



FT124002  
Jaune



FT124003  
Gris



FT124004  
Noir