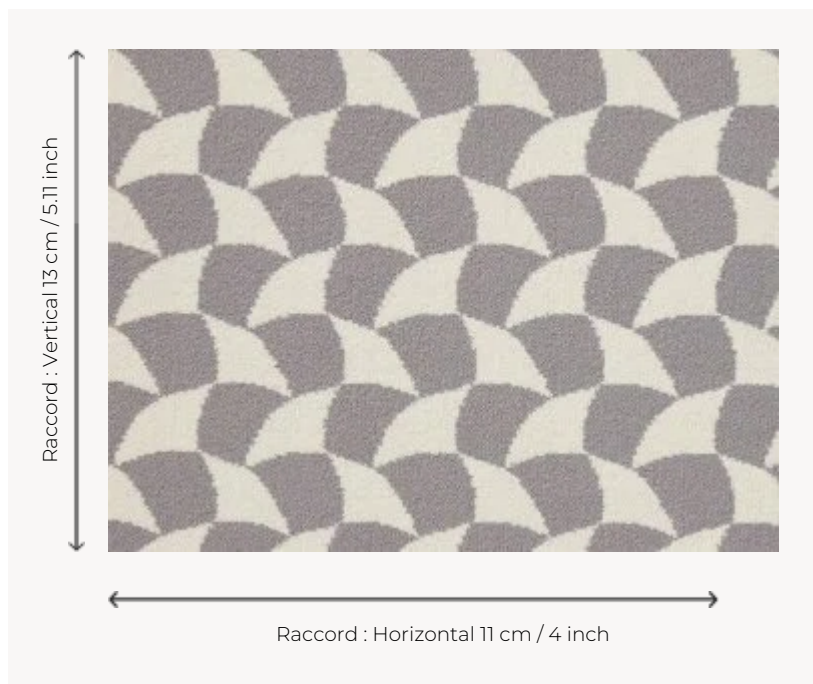


FT127003 LUTETIA

This small geometric pattern is an interpretation of a textile sample from the 20's kept in the Heritage department of Maison Pierre Frey, reminder of the silver metal used to top New York skyscrapers. Worked in Axminster weaving, it creates a modern and graphic heavy traffic carpet.

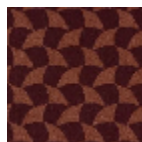
FT127003 - Gris



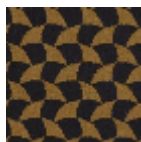
Pierre Frey

| | |
|-------------------------|---|
| PERFORMANCE | TRAFIC INTENSE - NON FEU |
| FAMILY | Carpet |
| TECHNIQUE | Fast-Track woven Axminster |
| USE | Intensive traffic |
| COMPOSITION | 80 % Wool - 20 % Polyamide |
| DENSITY | 7x10 |
| PILE | Cut pile |
| ASPECT | Mat |
| REPEAT | H: 11 cm - 4,00 inch V: 13 cm - 5,11 inch Straight repeat |
| NUMBER OF COLORS | 2 |
| PILE HEIGHT | 7.50 mm 0.30 inch |
| TOTAL HEIGHT | 10.20 mm 0.40 inch |
| TOTAL WEIGHT | 7.79 oz/ft ² |
| CERTIFICATIONS | Passé |
| NOTES | Fire retardant Heavy traffic Large width |
| INFORMATION | Production tolerance +/- 3 to 5% Natural peeling |

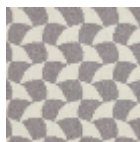
3 Colors



FT127001
Rouille



FT127002
Noir/or



FT127003
Gris