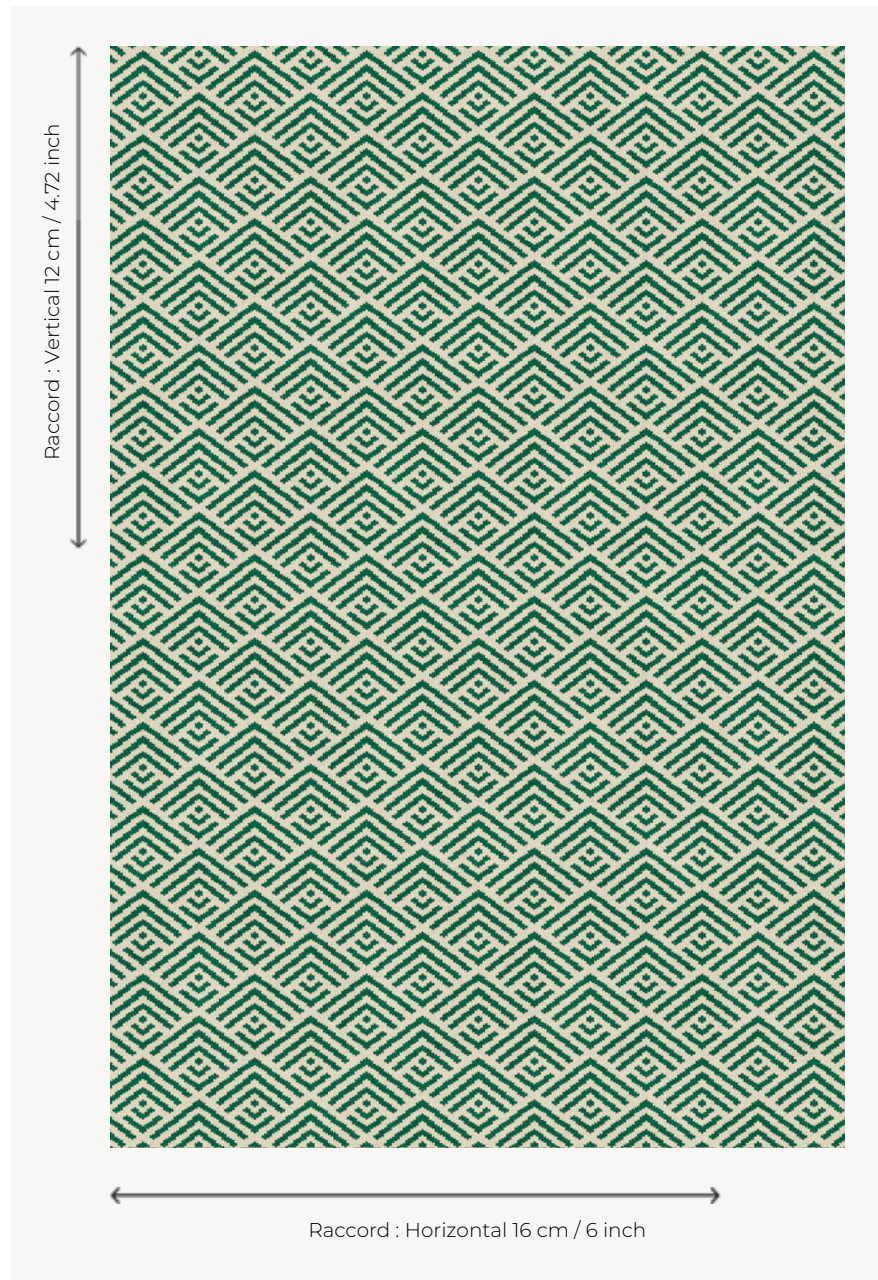


FT133001 MANI

A beautiful allusion to South American culture and its numerous multicolored markets, MANI and its diamond-shaped motifs evokes basket weaving and wickerwork. This Axminster weaving will be ideal for hotels, restaurants, ...

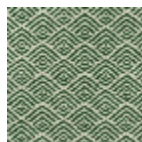
FT133001 - Vert



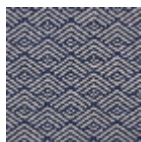
Pierre Frey

PERFORMANCE	TRAFIC INTENSE - NON FEU
FAMILY	Carpet
TECHNIQUE	Fast-Track woven Axminster
USE	Intensive traffic
COMPOSITION	80 % Wool - 20 % Polyamide
DENSITY	7x10
PILE	Cut pile
ASPECT	Mat
REPEAT	H: 16 cm - 6,00 inch V: 12 cm - 4,72 inch Straight repeat
NUMBER OF COLORS	2
PILE HEIGHT	7.30 mm 0.29 inch
TOTAL HEIGHT	10.00 mm 0.39 inch
TOTAL WEIGHT	7.05 oz/ft ²
CERTIFICATIONS	Passé
NOTES	Fire retardant Heavy traffic Large width
INFORMATION	Production tolerance +/- 3 to 5% Natural peeling

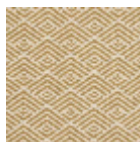
3 Colors



FT133001
Vert



FT133002
Marine



FT133005
Jaune