

FT136002 PATCHUKA

Colorful geometric patterns intertwine to show a dreamy Central America where handmade weaving is a limitless source of inspiration. PATCHUKA is woven by blending a flat-woven background with a hand-knotted pattern in wool.

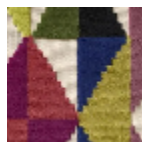
FT136002 - ACIDULÉ



Pierre Frey

FAMILY	Rug
TECHNIQUE	Mixed technique
USE	Light traffic
COMPOSITION	95 % Wool - 5 % Jute
PILE	Woven Cut pile
ASPECT	Mat - Textured - Sculpted
NUMBER OF COLORS	9
PILE HEIGHT	5.00 mm, 10.00 mm 0.20 inch, 0.39 inch
TOTAL HEIGHT	12.00 mm 0.47 inch
TOTAL WEIGHT	11.47 oz/ft ²
CERTIFICATIONS	Non testé
NOTES	Craft manufacturing 100% natural fiber
INFORMATION	Production tolerance +/- 3 to 5% Natural irregularities Natural peeling

1 Colors



FT136002
ACIDULÉ