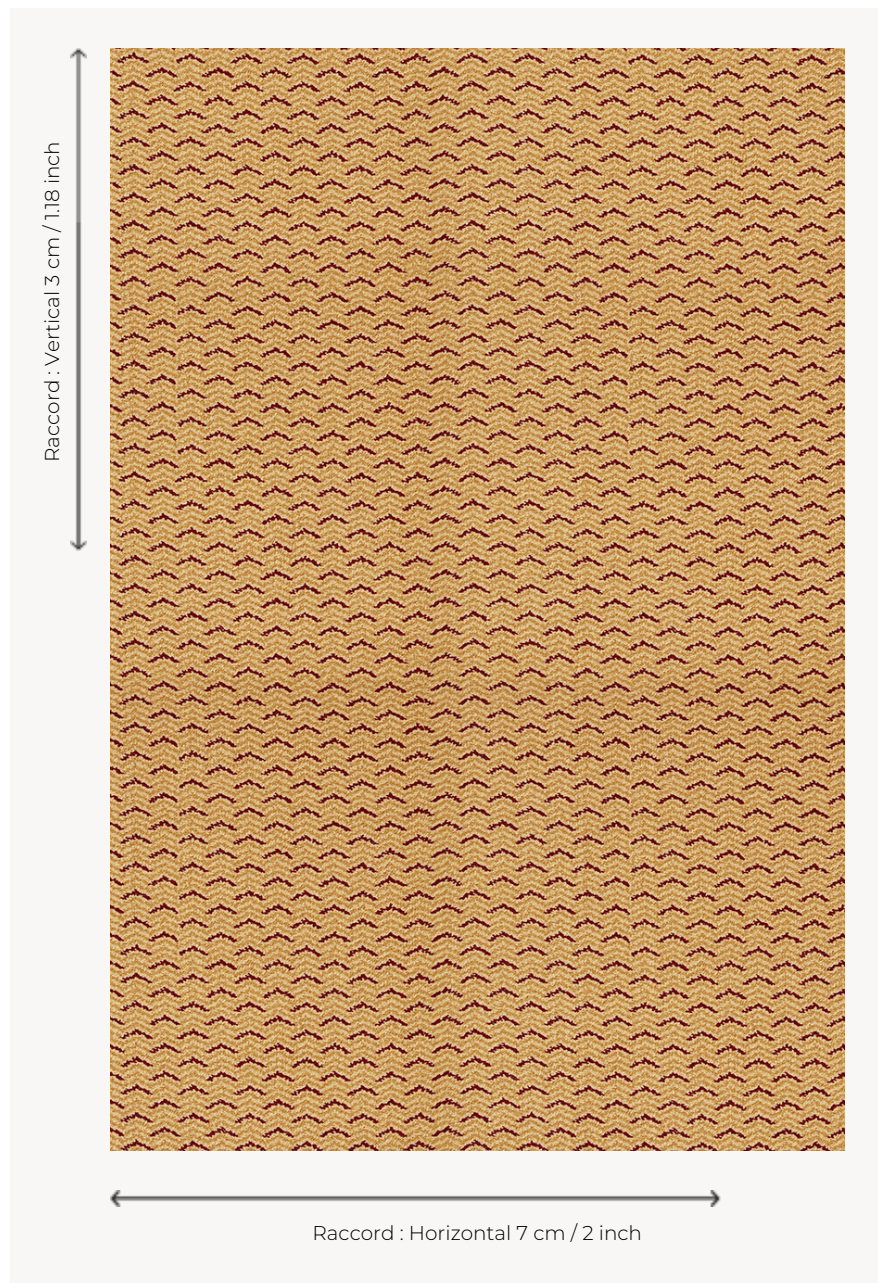


FT142003 OTTO

This Axminster carpet, woven in 80% wool and 20% polyamide, is a charming small semi-plain, which is characterized by its subtly colored geometric shapes.

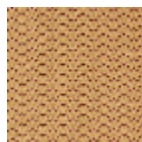
FT142003 - Curry



Pierre Frey

PERFORMANCE	TRAFIC INTENSE - NON FEU
FAMILY	Carpet
TECHNIQUE	Fast-Track woven Axminster
USE	Intensive traffic
COMPOSITION	80 % Wool - 20 % Polyamide
DENSITY	7x10
PILE	Cut pile
ASPECT	Mat
REPEAT	H: 7 cm - 2,00 inch V: 3 cm - 1,18 inch Straight repeat
NUMBER OF COLORS	3
PILE HEIGHT	7.30 mm 0.29 inch
TOTAL HEIGHT	10.00 mm 0.39 inch
TOTAL WEIGHT	7.06 oz/ft ²
CERTIFICATIONS	Passé
NOTES	Fire retardant Heavy traffic Large width
INFORMATION	Production tolerance +/- 3 to 5% Natural peeling

2 Colors



FT142003
Curry



FT142004
AQUA