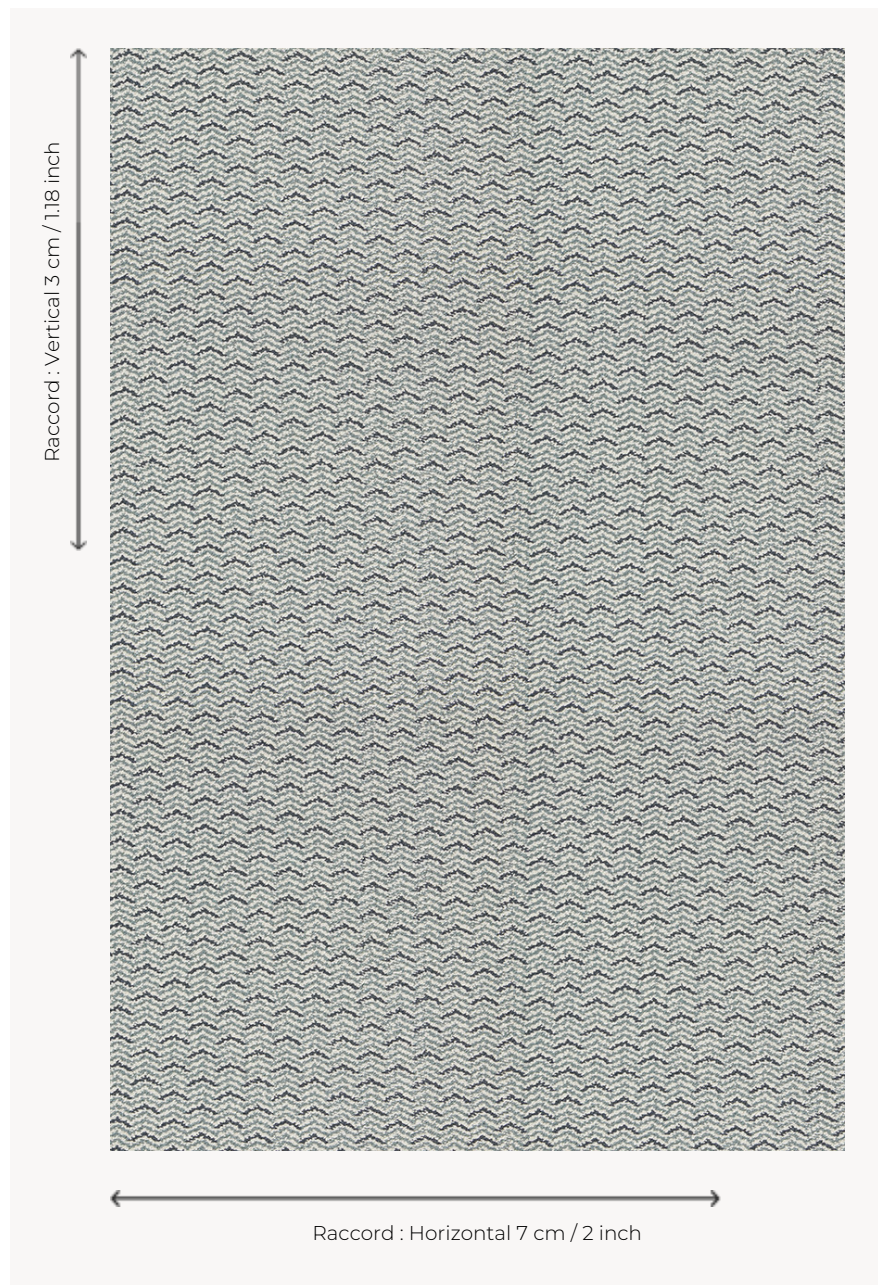


FT142004 OTTO

This Axminster carpet, woven in 80% wool and 20% polyamide, is a charming small semi-plain, which is characterized by its subtly colored geometric shapes.

FT142004 - AQUA



Pierre Frey

| | |
|-------------------------|---|
| PERFORMANCE | TRAFFIC INTENSE - NON FEU |
| FAMILY | Carpet |
| TECHNIQUE | Fast-Track woven Axminster |
| USE | Intensive traffic |
| COMPOSITION | 80 % Wool - 20 % Polyamide |
| DENSITY | 7x10 |
| PILE | Cut pile |
| ASPECT | Mat |
| REPEAT | H: 7 cm - 2,00 inch V: 3 cm - 1,18 inch Straight repeat |
| NUMBER OF COLORS | 3 |
| PILE HEIGHT | 7.30 mm 0.29 inch |
| TOTAL HEIGHT | 10.00 mm 0.39 inch |
| TOTAL WEIGHT | 7.06 oz/ft ² |
| CERTIFICATIONS | Passé |
| NOTES | Fire retardant Heavy traffic Large width |
| INFORMATION | Production tolerance +/- 3 to 5% Natural peeling |

2 Colors



FT142003
Curry



FT142004
AQUA