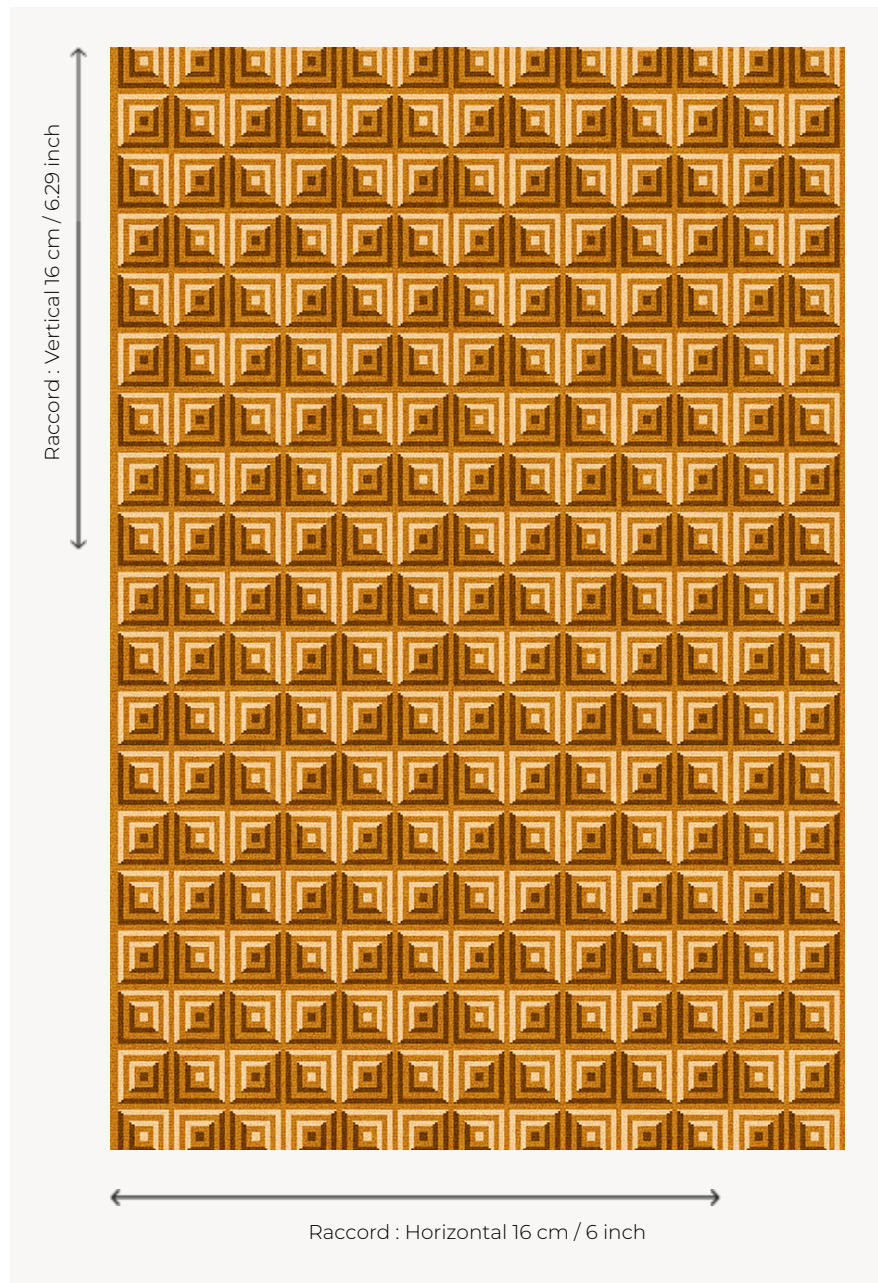


# FT144001 TABLET

Art Deco design, TABLET reinterprets in Axminster carpet one of the archives (LA286-1) of the Maison.

## FT144001 - Miel



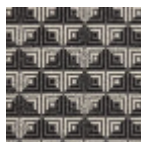
## Pierre Frey

<b>PERFORMANCE</b>	TRAFIC INTENSE - NON FEU
<b>FAMILY</b>	Carpet
<b>TECHNIQUE</b>	Woven Axminster
<b>USE</b>	Intensive traffic
<b>COMPOSITION</b>	80 % Wool - 20 % Polyamide
<b>DENSITY</b>	7x10
<b>PILE</b>	Cut pile
<b>ASPECT</b>	Mat
<b>REPEAT</b>	H: 16 cm - 6,00 inch V: 16 cm - 6,29 inch Straight repeat
<b>NUMBER OF COLORS</b>	3
<b>PILE HEIGHT</b>	7.60 mm 0.30 inch
<b>TOTAL HEIGHT</b>	10.30 mm 0.40 inch
<b>TOTAL WEIGHT</b>	8.36 oz/ft <sup>2</sup>
<b>CERTIFICATIONS</b>	Passé
<b>NOTES</b>	Fire retardant Heavy traffic Large width
<b>INFORMATION</b>	Production tolerance +/- 3 to 5% Natural peeling

## 2 Colors



FT144001  
Miel



FT144002  
Ardoise