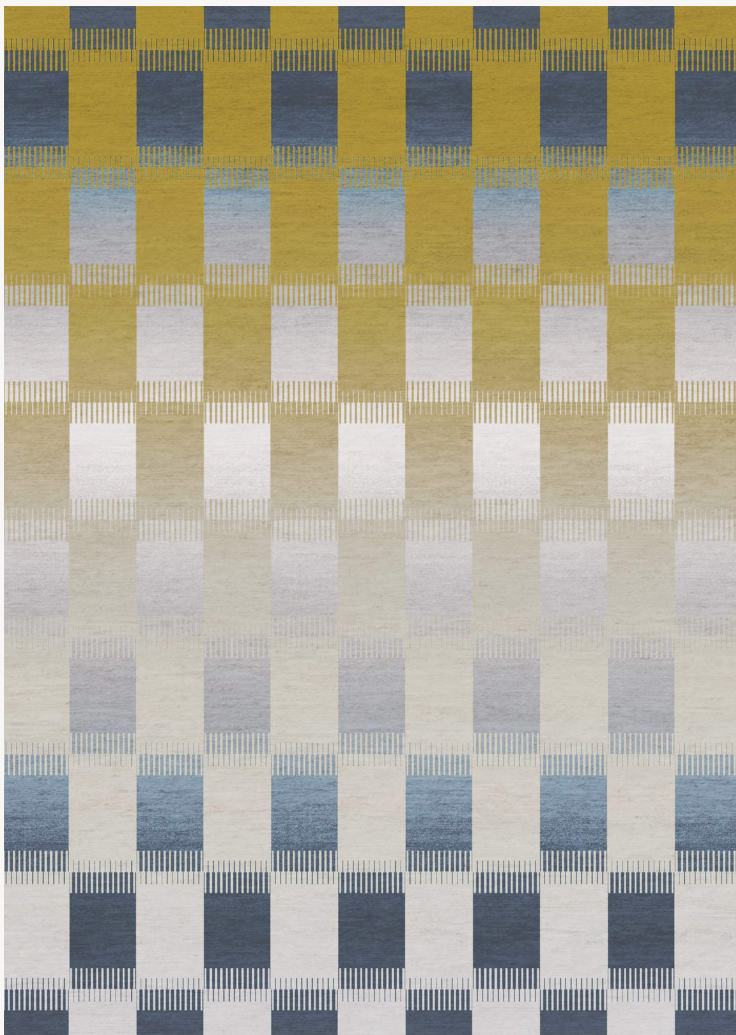


## FT153001 TIAO

This checkerboard pattern is treated like an ikat, giving the rug a deep effect. Entirely hand-knotted in Nepal in a traditional way, it has a cashmere and silk pile.

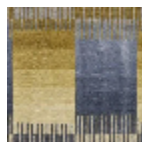
### FT153001 - MOUTARDE/BLEU



### Pierre Frey

<b>FAMILY</b>	Rug
<b>TECHNIQUE</b>	Nepalese hand-knot
<b>USE</b>	Light traffic
<b>COMPOSITION</b>	50 % Silk - 50 % Cashmere
<b>DENSITY</b>	200 knots/sq.ft
<b>PILE</b>	Cut pile
<b>ASPECT</b>	Shiny
<b>NUMBER OF COLORS</b>	14
<b>PILE HEIGHT</b>	8.00 mm 0.31 inch
<b>TOTAL HEIGHT</b>	10.00 mm 0.39 inch
<b>TOTAL WEIGHT</b>	10.49 oz/ft <sup>2</sup>
<b>CERTIFICATIONS</b>	Non testé
<b>NOTES</b>	100% handmade Craft manufacturing 100% natural fiber
<b>INFORMATION</b>	Production tolerance +/- 3 to 5% Natural irregularities Natural peeling

# 1 Colors



FT153001  
MOUTARDE/B  
LEU