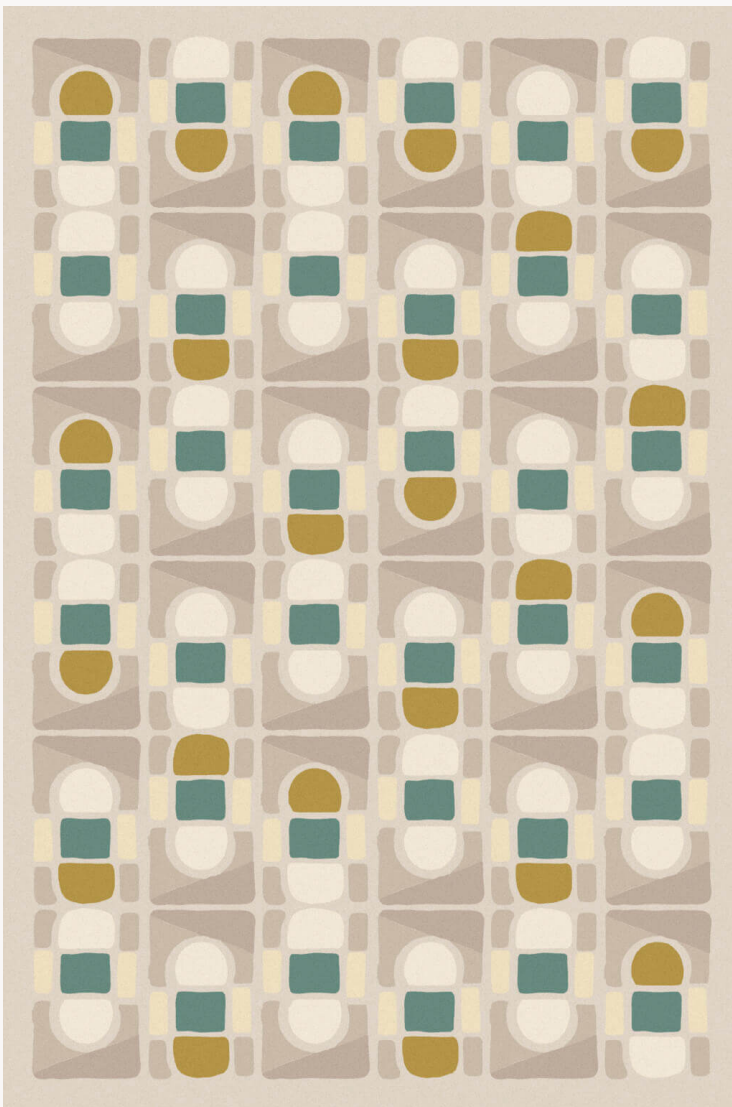


FT206001 PANYA

Entirely knotted by hand in two lengths of velvet, the blend of New Zealand wool and natural silk gives this carpet its rounded geometric character.

FT206001 - Verveine



Pierre Frey

FAMILY	Rug
TECHNIQUE	Nepalese hand-knot
USE	Light traffic
COMPOSITION	66 % Wool - 34 % Silk
DENSITY	100 knots/sq.ft
PILE	Cut pile high and low
ASPECT	Shiny - Mat - Sculpted
NUMBER OF COLORS	7
PILE HEIGHT	8.00 mm, 6.00 mm 0.24 inch, 0.31 inch
TOTAL HEIGHT	9.00 mm 0.35 inch
TOTAL WEIGHT	12.45 oz/ft ²
CERTIFICATIONS	Non testé
NOTES	100% handmade Craft manufacturing 100% natural fiber
INFORMATION	Production tolerance +/- 3 to 5% Natural irregularities Natural peeling

2 Colors



FT206001
Verveine



FT206002
CÉLADON