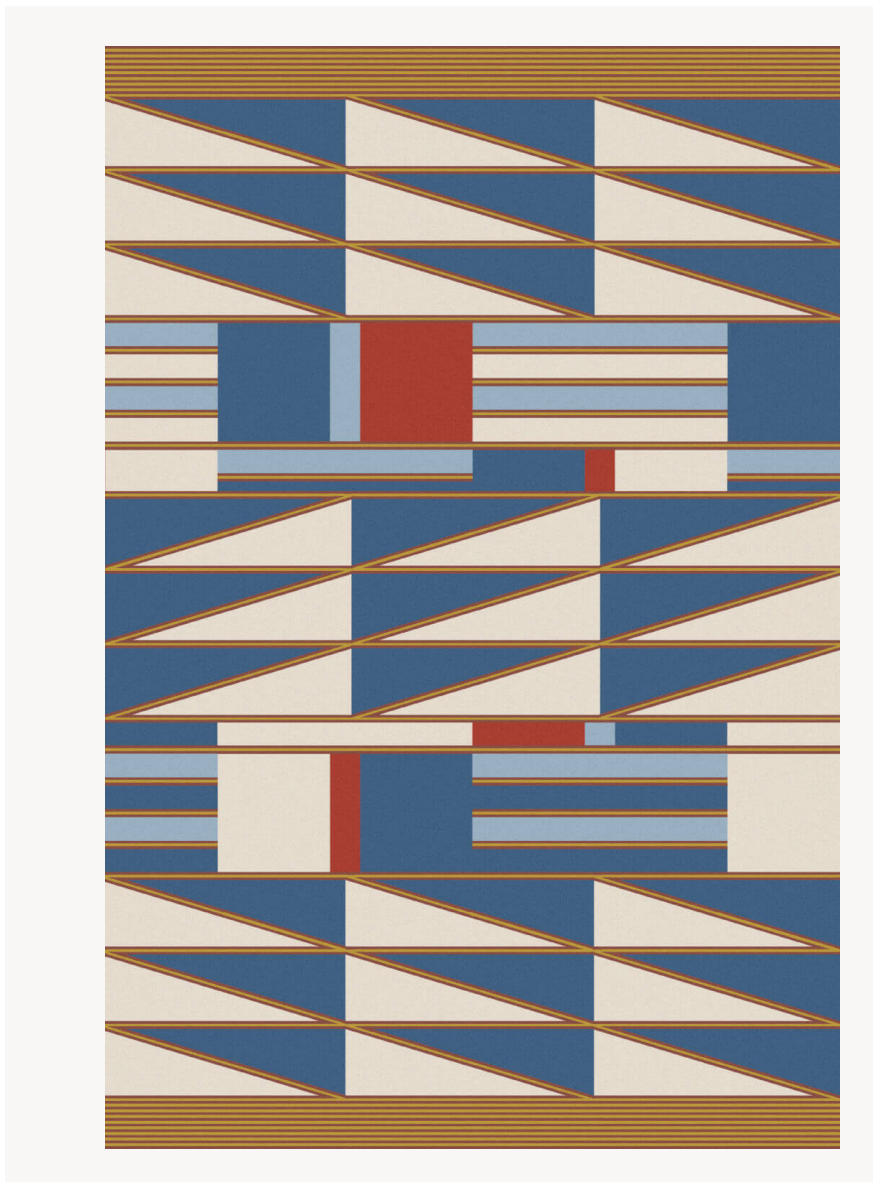


## FT207002 HISSA

Inspired by an old African handicraft rug, this rug develops a set of graphic lines with several heights of botanical silk velvet, against a background of looped velvet made from New Zealand wool.

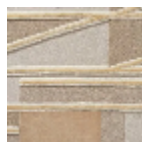
### FT207002 - Bleu nattier



### Pierre Frey

<b>FAMILY</b>	Carpet Rug
<b>TECHNIQUE</b>	Hand-tuft
<b>USE</b>	Moderate traffic
<b>COMPOSITION</b>	67 % Wool 380Tex - 33 % Bamboo viscose
<b>DENSITY</b>	88 Oz/y2
<b>PILE</b>	Cut pile Loop pile
<b>ASPECT</b>	Shiny - Mat - Carved - Sculpted
<b>NUMBER OF COLORS</b>	6
<b>PILE HEIGHT</b>	8.00 mm, 11.00 mm, 6.00 mm, 9.00 mm, 7.00 mm 0.28 inch, 0.43 inch, 0.24 inch, 0.31 inch, 0.35 inch
<b>TOTAL HEIGHT</b>	14.00 mm 0.55 inch
<b>TOTAL WEIGHT</b>	17.77 oz/ft <sup>2</sup>
<b>CERTIFICATIONS</b>	Non testé
<b>NOTES</b>	100% handmade 100% natural fiber
<b>INFORMATION</b>	Production tolerance +/- 3 to 5% Natural irregularities Natural peeling

## 2 Colors



FT207001  
Vanille



FT207002  
Bleu nattier