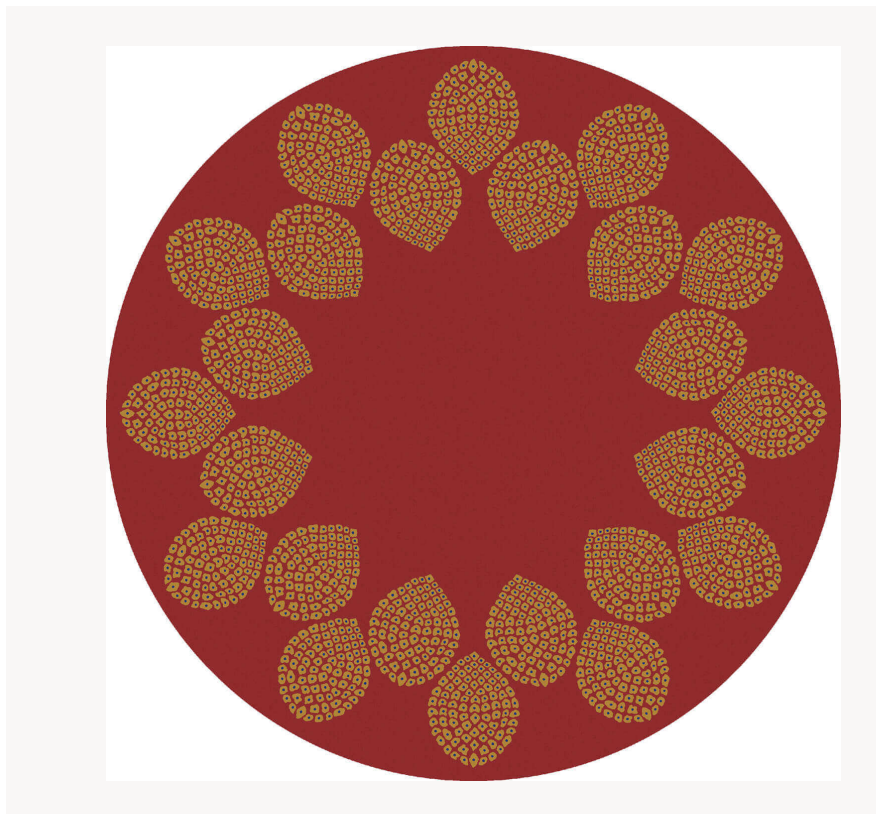


## FT235002 BURSA

Elegant and sophisticated, this wide border inspired by pomegranate motifs is adorned with botanical silk, on a heathered ground in two heights of cut velvet.

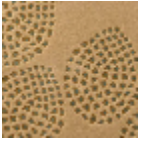
### FT235002 - Carmin



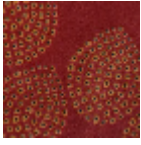
### Pierre Frey

<b>FAMILY</b>	Carpet Rug
<b>TECHNIQUE</b>	Hand-tuft
<b>USE</b>	Moderate traffic
<b>COMPOSITION</b>	53 % Wool 380Tex - 37 % Bamboo viscose - 10 % Shiny Nylon
<b>DENSITY</b>	88
<b>PILE</b>	Cut pile high and low
<b>ASPECT</b>	Shiny - Sculpted
<b>NUMBER OF COLORS</b>	4
<b>PILE HEIGHT</b>	8.00 mm, 9.00 mm 0.31 inch, 0.35 inch
<b>TOTAL HEIGHT</b>	12.00 mm 0.47 inch
<b>TOTAL WEIGHT</b>	17.77 oz/ft <sup>2</sup>
<b>CERTIFICATIONS</b>	Non testé
<b>NOTES</b>	100% handmade
<b>INFORMATION</b>	Production tolerance +/- 3 to 5% Natural irregularities Natural peeling

## 2 Colors



FT235001  
Dune



FT235002  
Carmin