

## FT252001 LA PLAGE

Based on the archives of Maison Pierre Frey, this graphic composition evokes the modern artists in Provence. The mix of wefts and colours brings a beautiful vibrating effect to this woven carpet.

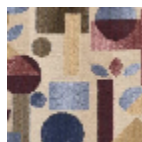
### FT252001 - Bleu



### Pierre Frey

<b>PERFORMANCE</b>	TRAFIC INTENSE - NON FEU
<b>FAMILY</b>	Carpet
<b>TECHNIQUE</b>	Fast-Track woven Axminster
<b>USE</b>	Intensive traffic
<b>COMPOSITION</b>	80 % Wool - 20 % Polyamide
<b>DENSITY</b>	7x10
<b>PILE</b>	Cut pile
<b>ASPECT</b>	Mat
<b>REPEAT</b>	H: 134 cm - 52,00 inch V: 128 cm - 50,39 inch Straight repeat
<b>NUMBER OF COLORS</b>	6
<b>PILE HEIGHT</b>	7.40 mm 0.29 inch
<b>TOTAL HEIGHT</b>	10.10 mm 0.39 inch
<b>TOTAL WEIGHT</b>	7.18 oz/ft <sup>2</sup>
<b>CERTIFICATIONS</b>	Passé
<b>NOTES</b>	Fire retardant Heavy traffic Large width
<b>INFORMATION</b>	Production tolerance +/- 3 to 5% Natural peeling

## 2 Colors



FT252001  
Bleu



FT252002  
Vert d'eau