

FT254001 CAVAILLON

Beautiful woven stripe in 7 colors. The rhythm of the colours brings originality to this beautiful timeless classic.

FT254001 - Bleu marine



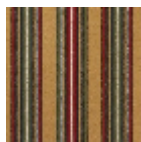
Pierre Frey

PERFORMANCE	TRAFIC INTENSE - NON FEU
FAMILY	Carpet
TECHNIQUE	Fast-Track woven Axminster
USE	Intensive traffic
COMPOSITION	80 % Wool - 20 % Polyamide
DENSITY	7x10
PILE	Cut pile
ASPECT	Mat
REPEAT	H: 34 cm - 13,00 inch V: 5 cm - 1,96 inch Straight repeat
NUMBER OF COLORS	7
PILE HEIGHT	7.40 mm 0.29 inch
TOTAL HEIGHT	10.10 mm 0.39 inch
TOTAL WEIGHT	7.18 oz/ft ²
CERTIFICATIONS	Passé
NOTES	Fire retardant Heavy traffic Large width
INFORMATION	Production tolerance +/- 3 to 5% Natural peeling

3 Colors



FT254001
Bleu marine



FT254002
Safran



FT254003
Vert d'eau