

## FT258004 SHEILA

Semi-plain woven on traditional loom rich in textures thanks to a blend of wool, cotton and chenille.  
The vibration of the colours is made thanks to a weaving set of 7 different wefts.

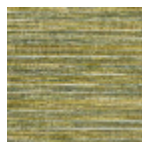
### FT258004 - Curcuma



### Pierre Frey

<b>FAMILY</b>	Rug
<b>TECHNIQUE</b>	Flat-woven
<b>USE</b>	Light traffic
<b>COMPOSITION</b>	40 % Chenille - 35 % Cotton - 25 % Wool
<b>DENSITY</b>	2,5 Lbs
<b>PILE</b>	Woven
<b>ASPECT</b>	Shiny - Textured
<b>NUMBER OF COLORS</b>	7
<b>PILE HEIGHT</b>	3.00 mm 0.12 inch
<b>TOTAL HEIGHT</b>	3.00 mm 0.11 inch
<b>TOTAL WEIGHT</b>	3.72 oz/ft <sup>2</sup>
<b>CERTIFICATIONS</b>	Non testé
<b>NOTES</b>	100% natural fiber
<b>INFORMATION</b>	Production tolerance +/- 3 to 5% Natural irregularities Natural peeling No sampling

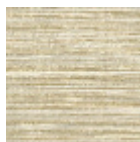
## 5 Colors



FT258001  
Tilleul



FT258002  
Bleu



FT258003  
Sable



FT258004  
Curcuma



FT258005  
Vert-de-gris