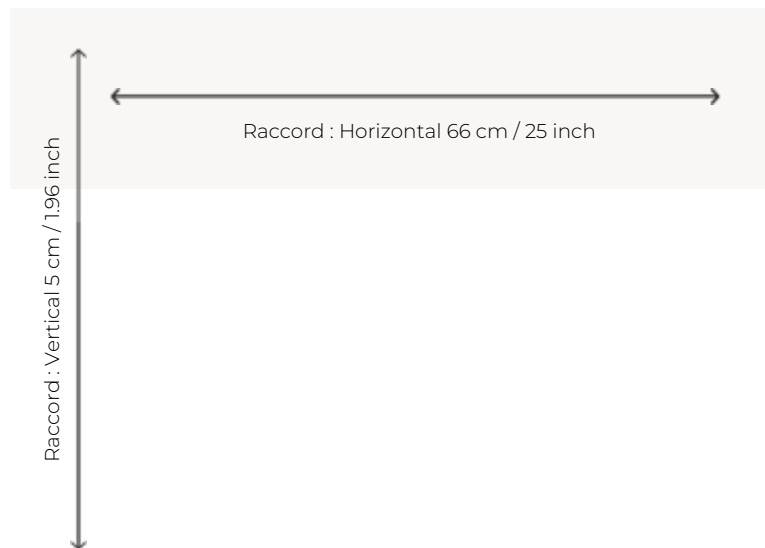




FT260_AX_002 JOAN

Oscillating between stripes and tartan, this carpet is an original mix of wefts and checks woven in 5 colours.

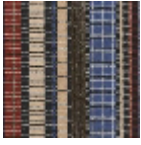
FT260_AX_002 -



Pierre Frey

PERFORMANCE	TRAFIC INTENSE - NON FEU
FAMILY	Carpet
TECHNIQUE	Fast-Track woven Axminster
USE	Intensive traffic
COMPOSITION	80 % Wool - 20 % Polyamide
DENSITY	7x10
PILE	Cut pile
ASPECT	Mat
REPEAT	H: 66 cm - 25,00 inch V: 5 cm - 1,96 inch Straight repeat
NUMBER OF COLORS	5
PILE HEIGHT	7.40 mm 0.29 inch
TOTAL HEIGHT	10.10 mm 0.39 inch
TOTAL WEIGHT	7.18 oz/ft ²
CERTIFICATIONS	Passé
NOTES	Fire retardant Heavy traffic Large width
INFORMATION	Production tolerance +/- 3 to 5% Natural peeling

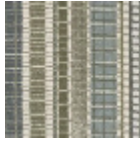
4 Colors



FT260001
Bleu



FT260002
Ocre



FT260003
Vert d'eau

FT260_AX_002