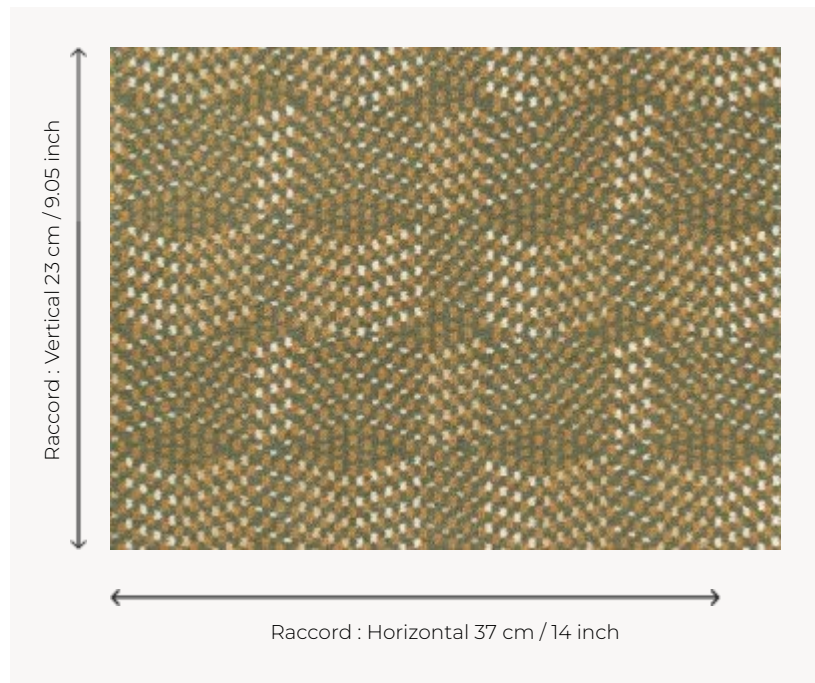


FT261003 OTTI

A tribute to the Bauhaus, a beautiful set of woven tiles in a 4 colour carpet.

FT261003 - FOUGÈRE



Pierre Frey

PERFORMANCE	TRAFIC INTENSE - NON FEU
FAMILY	Carpet
TECHNIQUE	Fast-Track woven Axminster
USE	Intensive traffic
COMPOSITION	80 % Wool - 20 % Polyamide
DENSITY	7x10
PILE	Cut pile
ASPECT	Mat
REPEAT	H: 37 cm - 14,00 inch V: 23 cm - 9,05 inch Straight repeat
NUMBER OF COLORS	4
PILE HEIGHT	7.40 mm 0.29 inch
TOTAL HEIGHT	10.10 mm 0.39 inch
TOTAL WEIGHT	7.18 oz/ft ²
CERTIFICATIONS	Passé
NOTES	Fire retardant Heavy traffic Large width
INFORMATION	Production tolerance +/- 3 to 5% Natural peeling

3 Colors



FT261001
Nuit



FT261002
Cuivre



FT261003
FOUGÈRE