

FT262002 JULIO

Linear and geometric, this brightly colored composition explores the multiple forms of South America. Woven carpet in 8 colours.

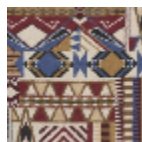
FT262002 - Vert d'eau



Pierre Frey

PERFORMANCE	TRAFIC INTENSE - NON FEU
FAMILY	Carpet
TECHNIQUE	Fast-Track woven Axminster
USE	Intensive traffic
COMPOSITION	80 % Wool - 20 % Polyamide
DENSITY	7x10
PILE	Cut pile
ASPECT	Mat
REPEAT	H: 133 cm - 52,00 inch V: 59 cm - 23,22 inch Straight repeat
NUMBER OF COLORS	8
PILE HEIGHT	7.40 mm 0.29 inch
TOTAL HEIGHT	10.10 mm 0.39 inch
TOTAL WEIGHT	7.18 oz/ft ²
CERTIFICATIONS	Passé
NOTES	Fire retardant Heavy traffic Large width
INFORMATION	Production tolerance +/- 3 to 5% Natural peeling

2 Colors



FT262001
Bleu



FT262002
Vert d'eau