

## FT269001 STEPPE

STEPPE is the transcription into a carpet of one of the three hand drawings imagined by Guillaume Delvigne for Maison Pierre Frey. Original and unique in form, STEPPE is a clever play of texture between a looped wool background and a vegetal silk velvet. The irregularity of the cut velvet is made possible thanks to the "over-tuft" technique and evokes an organic aspect that subtly responds to the spirit of Guillaume Delvigne's design.

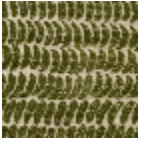
### FT269001 - Vert



### Pierre Frey

<b>FAMILY</b>	Rug
<b>ARTIST</b>	Guillaume Delvigne
<b>TECHNIQUE</b>	Hand-tuft
<b>USE</b>	Moderate traffic
<b>COMPOSITION</b>	52 % Bamboo viscose - 48 % Wool 380Tex
<b>DENSITY</b>	104 Oz/y2
<b>PILE</b>	Loop pile Overtufted cut pile
<b>ASPECT</b>	Shiny - Textured
<b>NUMBER OF COLORS</b>	2
<b>PILE HEIGHT</b>	8.00 mm, 10.00 mm 0.31 inch, 0.39 inch
<b>TOTAL HEIGHT</b>	13.00 mm 0.51 inch
<b>TOTAL WEIGHT</b>	19.66 oz/ft <sup>2</sup>
<b>CERTIFICATIONS</b>	Non testé
<b>NOTES</b>	100% handmade 100% natural fiber
<b>INFORMATION</b>	Production tolerance +/- 3 to 5% Natural irregularities Natural peeling

# 1 Colors



FT269001  
Vert