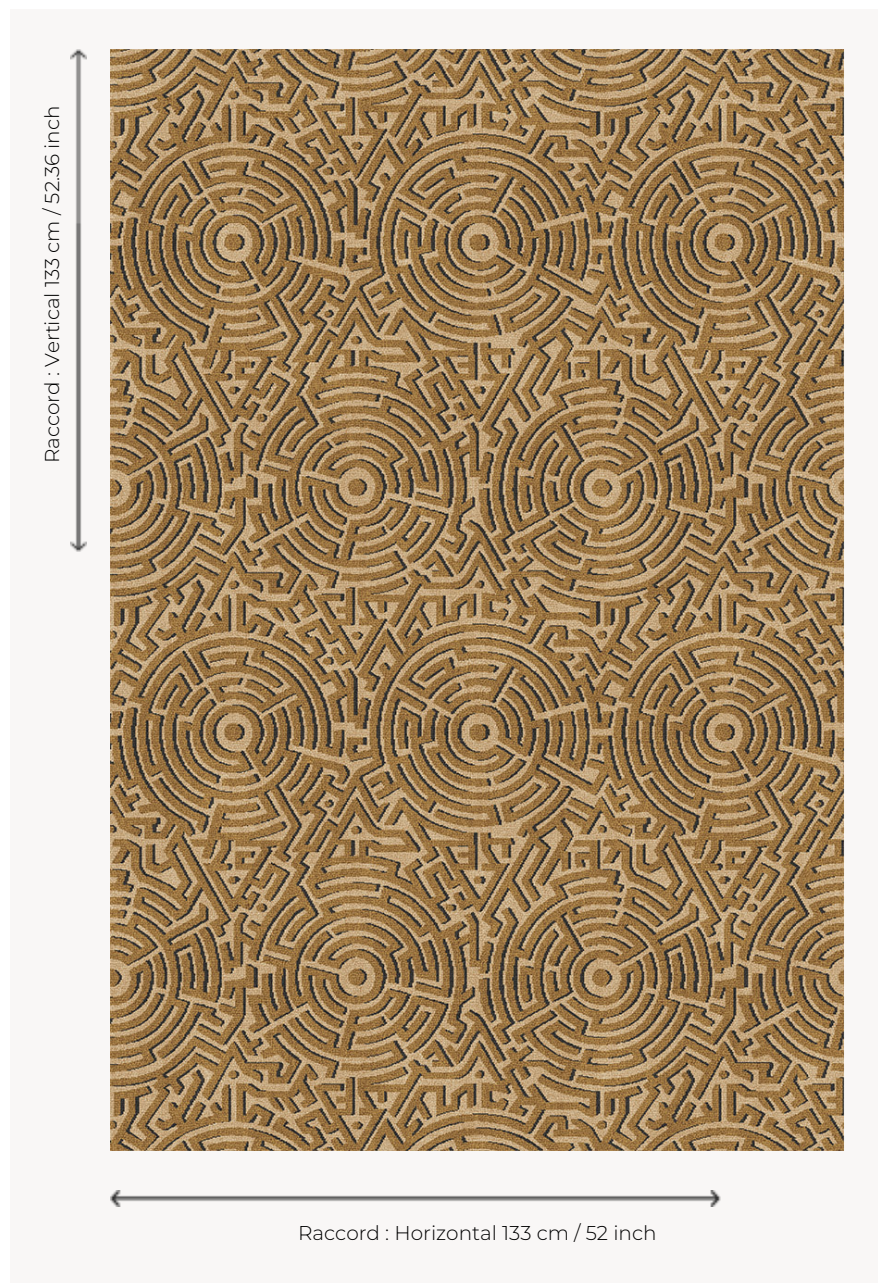


FT284001 HEDGEROW

Seen from the sky, these hedges interweave like labyrinths as symbols of patience and self reflection.

A tribute to landscape construction, this design combines references to 18th century gardens designed by Lancelot Brown and the illusionist works of Escher. Axminster woven, the patterns play with the light through different colours creating a volume effect.

FT284001 - Sable



Pierre Frey

| | |
|-------------------------|---|
| PERFORMANCE | TRAFIC INTENSE - NON FEU |
| FAMILY | Carpet |
| ARTIST | Ken Fulk |
| TECHNIQUE | Fast-Track woven Axminster |
| USE | Intensive traffic |
| COMPOSITION | 80 % Wool - 20 % Polyamide |
| DENSITY | 7x10 |
| PILE | Cut pile |
| ASPECT | Mat |
| REPEAT | H: 133 cm - 52,00 inch V: 133 cm - 52,36 inch Straight repeat |
| NUMBER OF COLORS | 3 |
| PILE HEIGHT | 7.40 mm 0.29 inch |
| TOTAL HEIGHT | 10.10 mm 0.39 inch |
| TOTAL WEIGHT | 7.18 oz/ft ² |
| CERTIFICATIONS | Passé |
| NOTES | Fire retardant Heavy traffic Large width |
| INFORMATION | Production tolerance +/- 3 to 5% Natural peeling |

4 Colors



FT284_FT_000
1

FT284_FT_000
3

FT284001
Sable

FT284002
Lichen