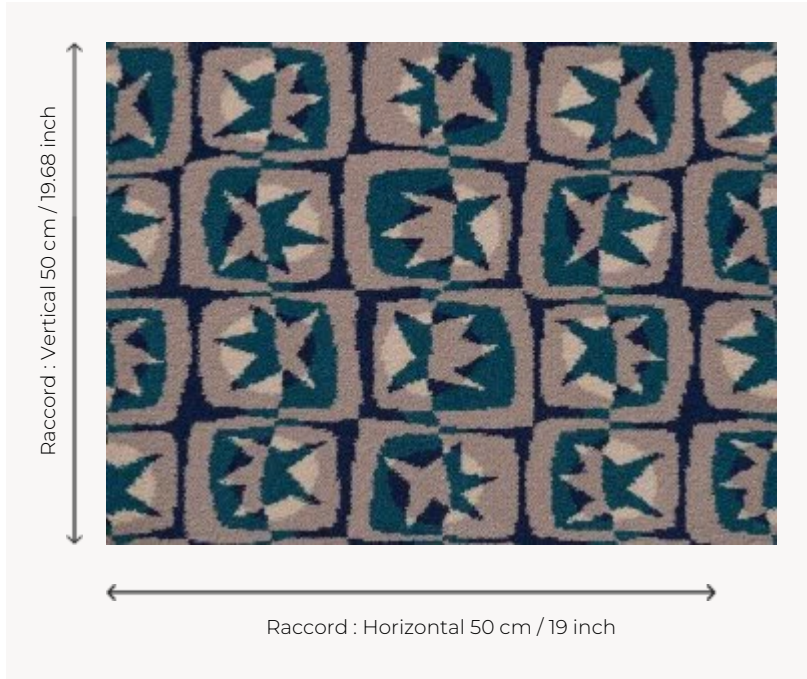


## FT316002 OLGA

Charming, cheerful and modern composition evoking old graphic tiles. Woven in large widths for a carpet resistant to the most intensive use. OLGA reproduces the pattern of the Etoiles fabric launched by Pierre Frey in the 1950s.

### FT316002 - CANARD



### Pierre Frey

<b>PERFORMANCE</b>	TRAFIC INTENSE - NON FEU
<b>FAMILY</b>	Carpet
<b>TECHNIQUE</b>	Fast-Track woven Axminster
<b>USE</b>	Intensive traffic
<b>COMPOSITION</b>	80 % Wool - 20 % Polyamide
<b>DENSITY</b>	7x10
<b>PILE</b>	Cut pile
<b>ASPECT</b>	Mat
<b>REPEAT</b>	H: 50 cm - 19,00 inch V: 50 cm - 19,68 inch Straight repeat
<b>NUMBER OF COLORS</b>	4
<b>PILE HEIGHT</b>	7.40 mm 0.29 inch
<b>TOTAL HEIGHT</b>	10.10 mm 0.39 inch
<b>TOTAL WEIGHT</b>	7.18 oz/ft <sup>2</sup>
<b>CERTIFICATIONS</b>	Passé
<b>NOTES</b>	Fire retardant Heavy traffic Large width
<b>INFORMATION</b>	Production tolerance +/- 3 to 5% Natural peeling

## 3 Colors



FT316001  
NOIR ET  
BLANC



FT316002  
CANARD



FT316003  
TERRE CUITE