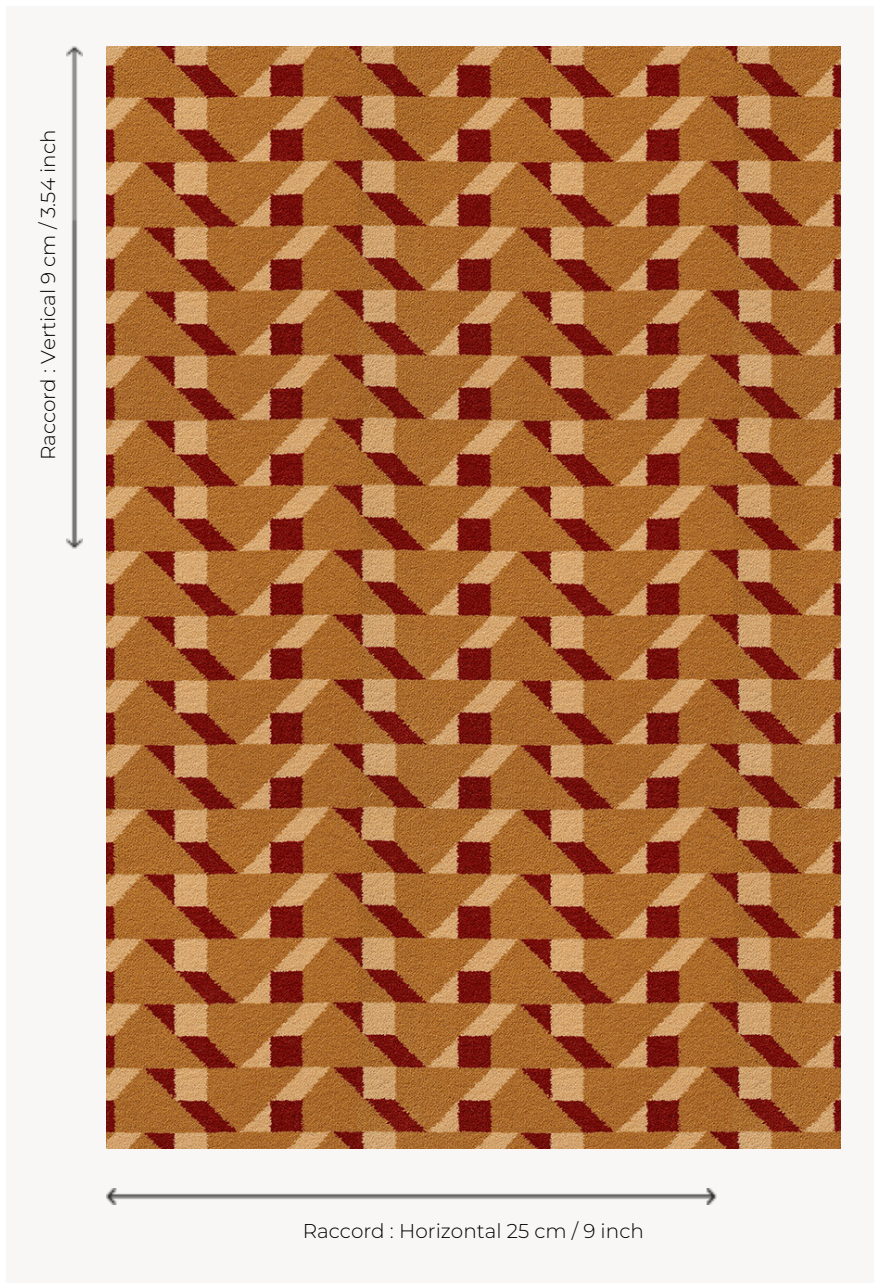


## FT317001 DIMITRI

DIMITRI revisits a work of art by the Russian constructivist artist Lyubov Popova from the early 20th century. Its geometric pattern plays on contrasts of color and black and white. Woven in large widths for a carpet resistant to the most intensive use.

### FT317001 - OCRE



### Pierre Frey

**PERFORMANCE** TRAFIC INTENSE - NON FEU

**FAMILY** Carpet

**TECHNIQUE** Fast-Track woven Axminster

**USE** Intensive traffic

**COMPOSITION** 80 % Wool - 20 % Polyamide

**DENSITY** 7x10

**PILE** Cut pile

**ASPECT** Mat

**REPEAT** H: 25 cm - 9,00 inch  
V: 9 cm - 3,54 inch  
Straight repeat

**NUMBER OF COLORS** 3

**PILE HEIGHT** 7.40 mm  
0.29 inch

**TOTAL HEIGHT** 10.10 mm  
0.39 inch

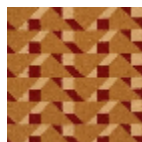
**TOTAL WEIGHT** 7.18 oz/ft<sup>2</sup>

**CERTIFICATIONS** Passé

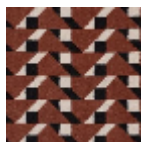
**NOTES** Fire retardant  
Heavy traffic  
Large width

**INFORMATION** Production tolerance +/- 3 to 5%  
Natural peeling

## 2 Colors



FT317001  
OCRE



FT317002  
BRIQUE