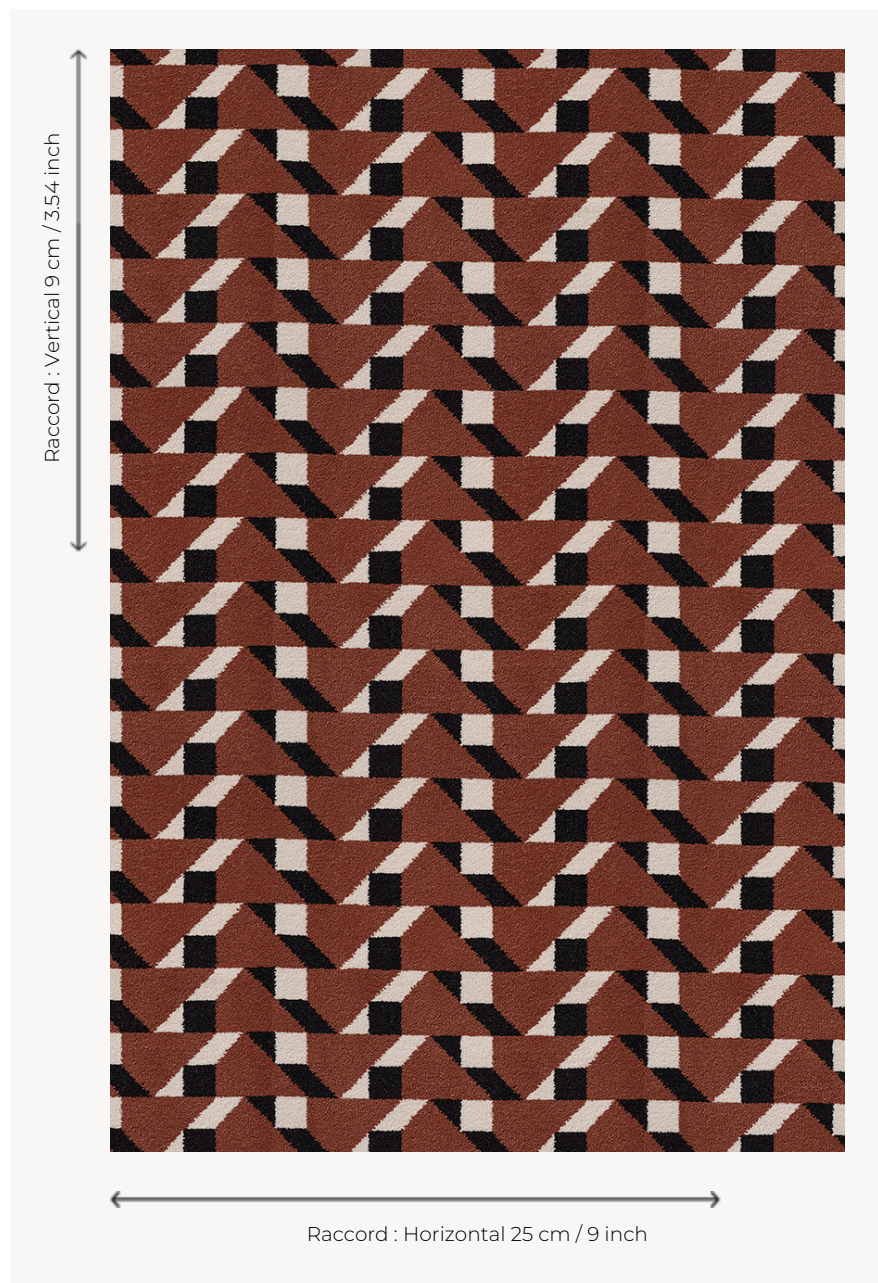


FT317002 DIMITRI

DIMITRI revisits a work of art by the Russian constructivist artist Lyubov Popova from the early 20th century. Its geometric pattern plays on contrasts of color and black and white. Woven in large widths for a carpet resistant to the most intensive use.

FT317002 - BRIQUE



Pierre Frey

PERFORMANCE TRAFIC INTENSE - NON FEU

FAMILY Carpet

TECHNIQUE Fast-Track woven Axminster

USE Intensive traffic

COMPOSITION 80 % Wool - 20 % Polyamide

DENSITY 7x10

PILE Cut pile

ASPECT Mat

REPEAT H: 25 cm - 9,00 inch
V: 9 cm - 3,54 inch
Straight repeat

NUMBER OF COLORS 3

PILE HEIGHT 7.40 mm
0.29 inch

TOTAL HEIGHT 10.10 mm
0.39 inch

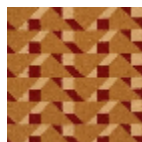
TOTAL WEIGHT 7.18 oz/ft²

CERTIFICATIONS Passé

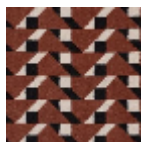
NOTES Fire retardant
Heavy traffic
Large width

INFORMATION Production tolerance +/- 3 to 5%
Natural peeling

2 Colors



FT317001
OCRE



FT317002
BRIQUE