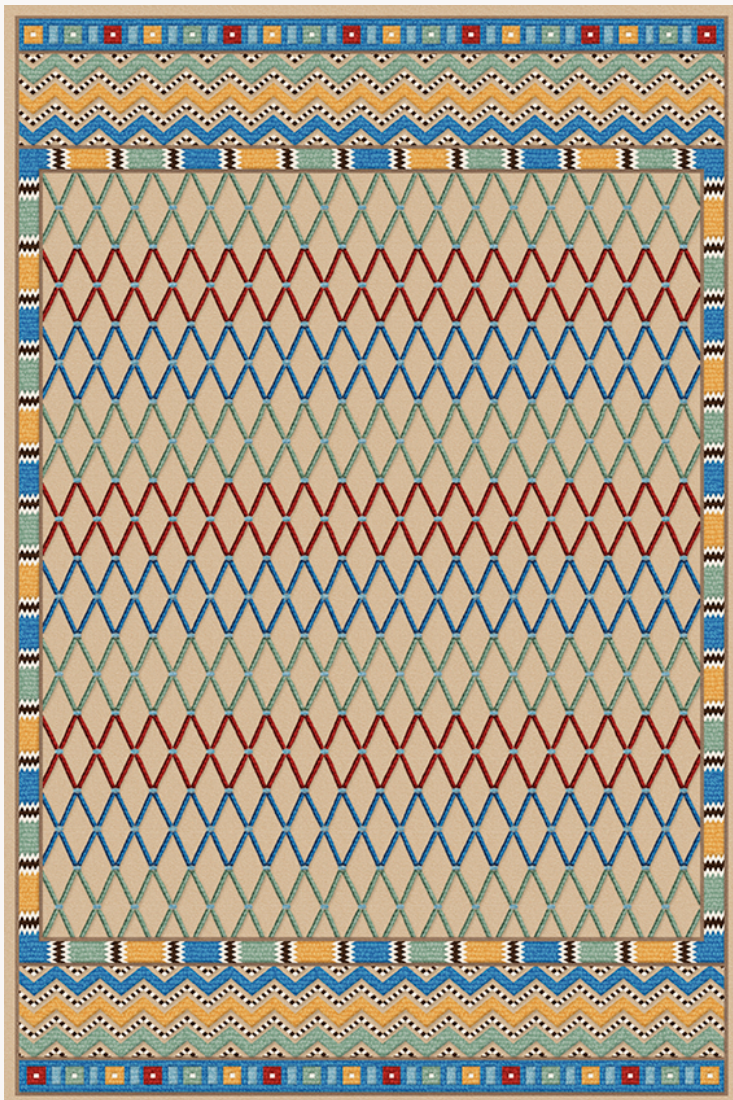


## FT319001 ABYDOS

Inspired by a funerary ornament from the Late Period exhibited in the Department of Egyptian Antiquities of the Louvre Museum, ABYDOS takes the fishnet shape of the work of art and offers a beautiful play of textures thanks to different wool loops. Hand-tufted, the relief of its design evokes the richness of the ornaments that decorated the mummies' shrouds.

FT319001 - NIL



### Pierre Frey

<b>FAMILY</b>	Rug
<b>ARTIST</b>	Musee Du Louvre
<b>COLLABORATION</b>	Musée du Louvre
<b>TECHNIQUE</b>	Hand-tuft
<b>USE</b>	Moderate traffic
<b>COMPOSITION</b>	100 % Wool 380Tex
<b>DENSITY</b>	88
<b>PILE</b>	Loop pile
<b>ASPECT</b>	Textured
<b>NUMBER OF COLORS</b>	12
<b>PILE HEIGHT</b>	6.00 mm, 10.00 mm 0.24 inch, 0.39 inch
<b>TOTAL HEIGHT</b>	13.00 mm 0.51 inch
<b>TOTAL WEIGHT</b>	17.77 oz/ft <sup>2</sup>
<b>CERTIFICATIONS</b>	Non testé
<b>NOTES</b>	100% handmade 100% natural fiber
<b>INFORMATION</b>	Production tolerance +/- 3 to 5% Natural irregularities Natural peeling

## 2 Colors



FT319001  
NIL



FT319002  
SAHARA