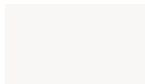




# FT323\_HT\_002 DJEDEFRE

Tribute to the decorative modernity of the Egypt of the Pharaohs, the DJEDEFRE border is directly inspired by the collections of the Swiss Egyptologist Gustave Jequier. Hand-tufted in New Zealand wool.

FT323\_HT\_002 -



## Pierre Frey

**PERFORMANCE** TRAFIC INTENSE - NON FEU

**FAMILY** Rug

**ARTIST** Musee Du Louvre

**COLLABORATION** Musée du Louvre

**TECHNIQUE** Hand-tuft

**USE** Intensive traffic  
Stairs

**COMPOSITION** 100 % Wool 380Tex

**DENSITY** 88

**PILE** Cut pile

**ASPECT** Mat

**NUMBER OF COLORS** 8

**PILE HEIGHT** 10.00 mm  
0.39 inch

**TOTAL HEIGHT** 13.00 mm  
0.51 inch

**TOTAL WEIGHT** 17.77 oz/ft<sup>2</sup>

---

**CERTIFICATIONS** Passé

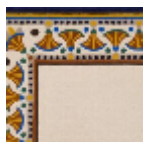
---

**NOTES** 100% handmade  
Fire retardant  
100% natural fiber

---

**INFORMATION** Production tolerance +/- 3 to 5%  
Natural irregularities  
Natural peeling

## 3 Colors



FT323\_HT\_002

FT323001  
RIVE DU NIL

FT323002  
PAPHYRUS