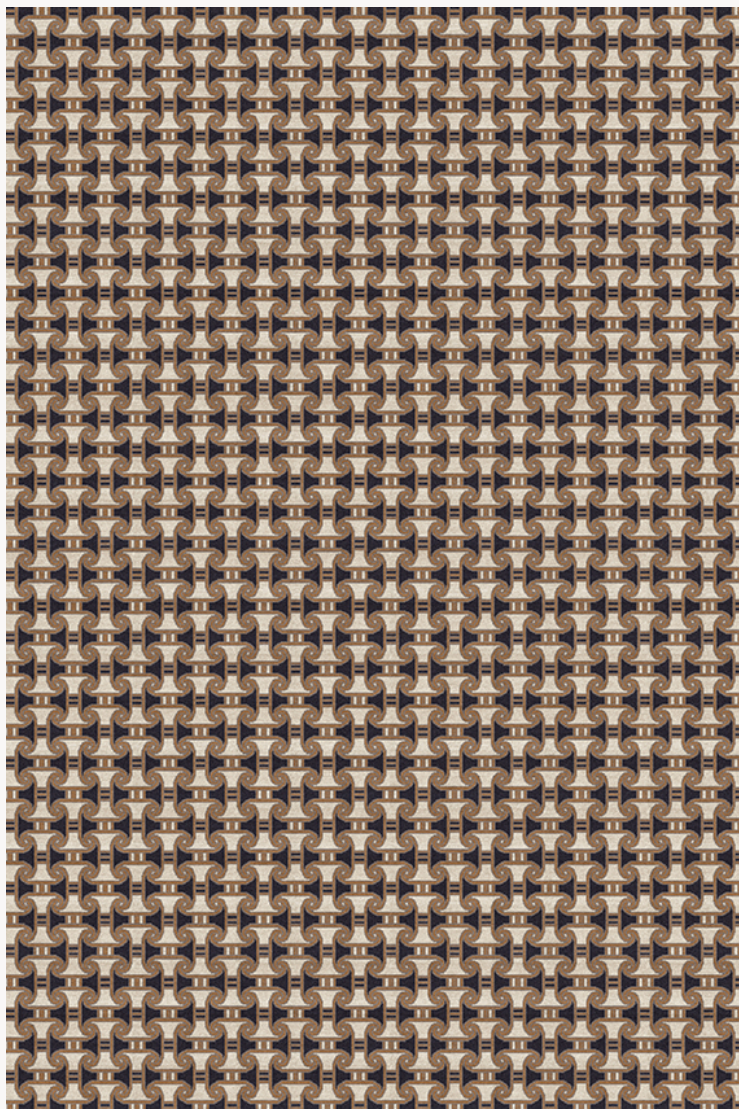


FT332002 SEDJES

Tribute to the decorative modernity of the Egypt of the Pharaohs, the SEDJES pattern is directly inspired by the collections of the Swiss Egyptologist Gustave Jequier. The finesse of this small repetitive pattern is made possible thanks to the ancestral knowledge of Nepalese hand-knotting, still made by hand in Kathmandu.

FT332002 - PAPYRUS



Pierre Frey

FAMILY	Rug
ARTIST	Musee Du Louvre
COLLABORATION	Musée du Louvre
TECHNIQUE	Nepalese hand-knot
USE	Moderate traffic Stairs
COMPOSITION	100 % Wool
DENSITY	100 knots/sq.ft
PILE	Cut pile
ASPECT	Mat
NUMBER OF COLORS	4
PILE HEIGHT	8.00 mm 0.31 inch
TOTAL HEIGHT	10.00 mm 0.39 inch
TOTAL WEIGHT	12.13 oz/ft ²
CERTIFICATIONS	Non testé
NOTES	100% handmade Craft manufacturing 100% natural fiber
INFORMATION	Production tolerance +/- 3 to 5% Natural irregularities Natural peeling

2 Colors



FT332001
RIVE DU NIL



FT332002
PAPYRUS