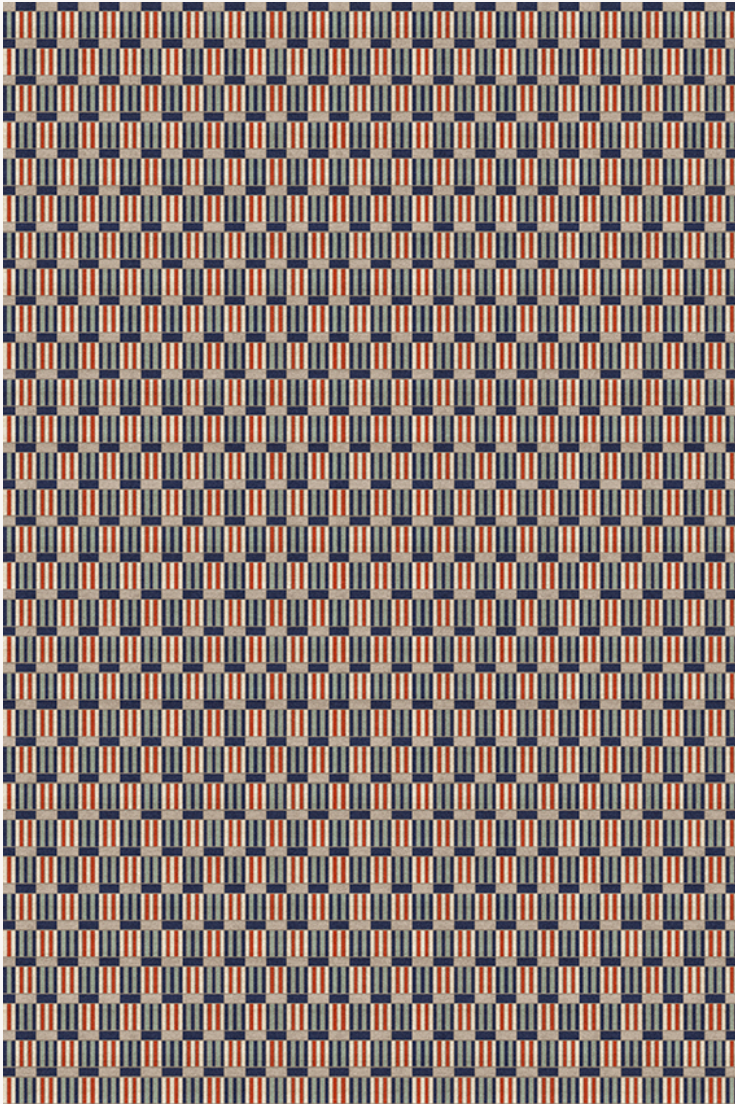


## FT333001 NEBKARE

Tribute to the decorative modernity of the Egypt of the Pharaohs, the NEBKARE pattern is directly inspired by the collections of the Swiss Egyptologist Gustave Jequier. The finesse of this small repetitive pattern is made possible thanks to the ancestral know-how of Nepalese hand-knotting, still made by hand in Kathmandu.

### FT333001 - RIVE DU NIL



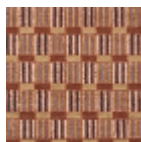
### Pierre Frey

|                         |   |
|-------------------------|---|
| <b>FAMILY</b>           | Rug   |
| <b>ARTIST</b>           | Musee Du Louvre   |
| <b>COLLABORATION</b>    | Musée du Louvre   |
| <b>TECHNIQUE</b>        | Nepalese hand-knot  |
| <b>USE</b>              | Moderate traffic<br>Stairs  |
| <b>COMPOSITION</b>      | 100 % Wool  |
| <b>DENSITY</b>          | 100 knots/sq.ft   |
| <b>PILE</b>             | Cut pile  |
| <b>ASPECT</b>           | Mat   |
| <b>NUMBER OF COLORS</b> | 6   |
| <b>PILE HEIGHT</b>      | 8.00 mm<br>0.31 inch  |
| <b>TOTAL HEIGHT</b>     | 10.00 mm<br>0.39 inch   |
| <b>TOTAL WEIGHT</b>     | 12.81 oz/ft <sup>2</sup>  |
| <b>CERTIFICATIONS</b>   | Non testé   |
| <b>NOTES</b>            | 100% handmade<br>Craft manufacturing<br>100% natural fiber                    |
| <b>INFORMATION</b>      | Production tolerance +/- 3 to 5%<br>Natural irregularities<br>Natural peeling |

## 2 Colors



FT333001  
RIVE DU NIL



FT333002  
CORAIL