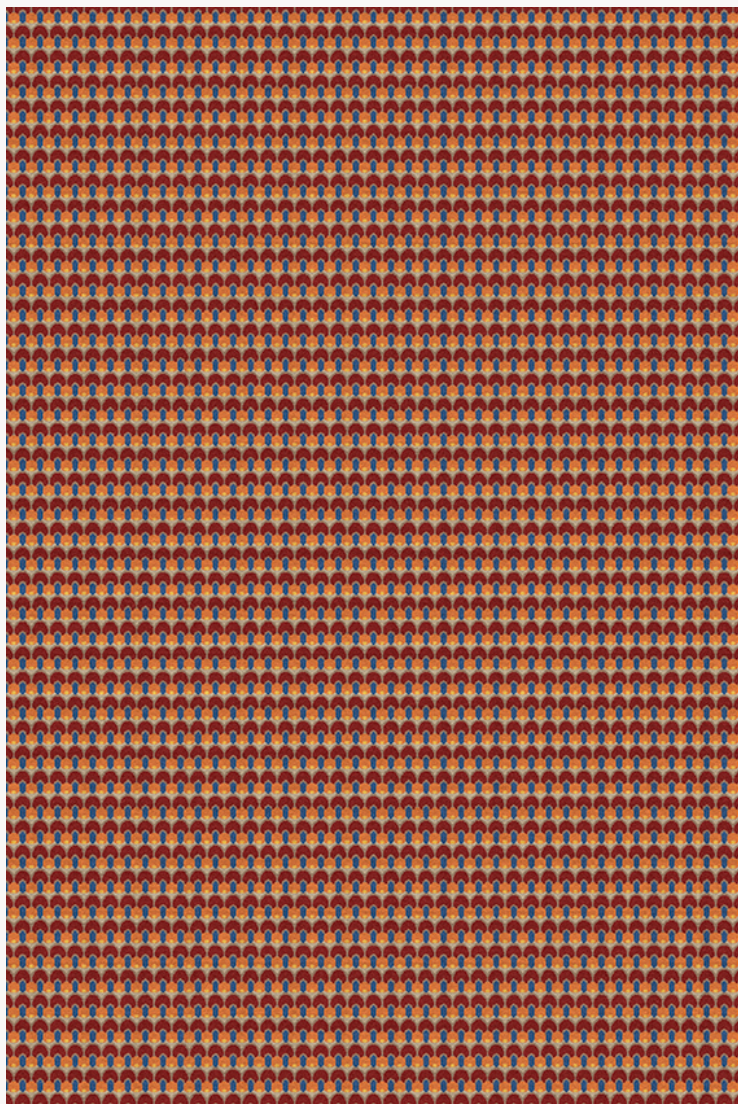


## FT334001 HOUNI

Tribute to the decorative modernity of the Egypt of the Pharaohs, the HOUNI pattern is directly inspired by the collections of the Swiss Egyptologist Gustave Jequier. The finesse of this small repetitive pattern is made possible thanks to the ancestral knowledge of Nepalese hand-knotting, still made by hand in Kathmandu.

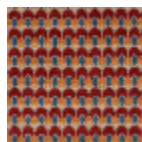
### FT334001 - RIVE DU NIL



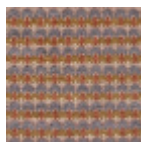
### Pierre Frey

<b>FAMILY</b>	Rug
<b>ARTIST</b>	Musee Du Louvre
<b>COLLABORATION</b>	Musée du Louvre
<b>TECHNIQUE</b>	Nepalese hand-knot
<b>USE</b>	Moderate traffic Stairs
<b>COMPOSITION</b>	100 % Wool
<b>DENSITY</b>	100 knots/sq.ft
<b>PILE</b>	Cut pile
<b>ASPECT</b>	Mat
<b>NUMBER OF COLORS</b>	6
<b>PILE HEIGHT</b>	8.00 mm 0.31 inch
<b>TOTAL HEIGHT</b>	10.00 mm 0.39 inch
<b>TOTAL WEIGHT</b>	12.13 oz/ft <sup>2</sup>
<b>CERTIFICATIONS</b>	Non testé
<b>NOTES</b>	100% handmade Craft manufacturing 100% natural fiber
<b>INFORMATION</b>	Production tolerance +/- 3 to 5% Natural irregularities Natural peeling

## 2 Colors



FT334001  
RIVE DU NIL



FT334002  
CORAIL