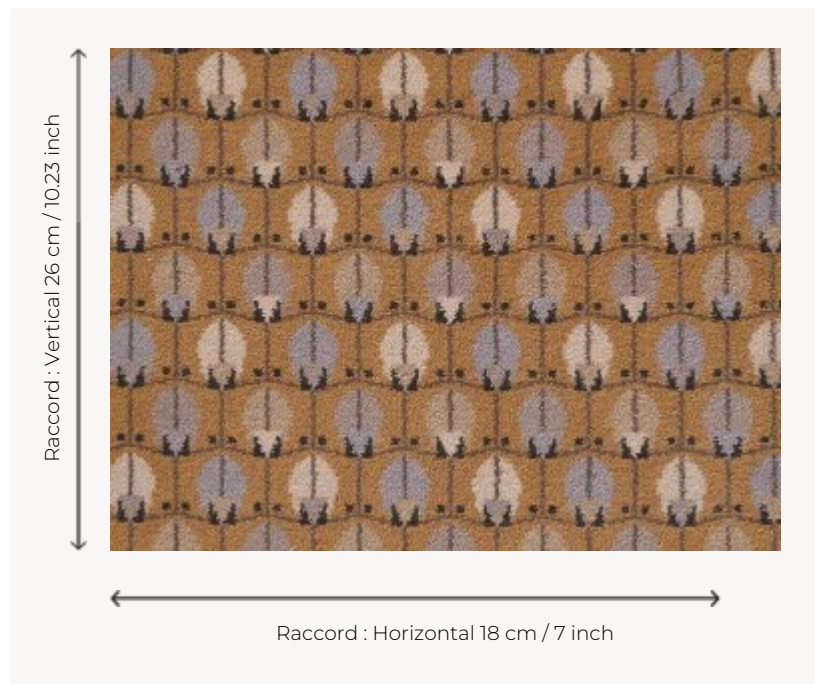


## FT339003 MENNA

This charming little graphic pattern reproduces a textile sample from a 1908 collection in the Pierre Frey archives. Woven in large width for a carpet resistant to the most intensive uses.

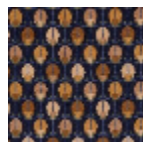
### FT339003 - ORGE



### Pierre Frey

|                         |  |
|-------------------------|--|
| <b>PERFORMANCE</b>      | TRAFIC INTENSE - NON FEU   |
| <b>FAMILY</b>           | Carpet   |
| <b>TECHNIQUE</b>        | Fast-Track woven Axminster                                       |
| <b>USE</b>              | Intensive traffic  |
| <b>COMPOSITION</b>      | 80 % Wool - 20 % Polyamide                                       |
| <b>DENSITY</b>          | 7x10   |
| <b>PILE</b>             | Cut pile   |
| <b>ASPECT</b>           | Mat  |
| <b>REPEAT</b>           | H: 18 cm - 7,00 inch<br>V: 26 cm - 10,23 inch<br>Straight repeat |
| <b>NUMBER OF COLORS</b> | 7  |
| <b>PILE HEIGHT</b>      | 7.40 mm<br>0.29 inch   |
| <b>TOTAL HEIGHT</b>     | 10.10 mm<br>0.39 inch  |
| <b>TOTAL WEIGHT</b>     | 7.18 oz/ft <sup>2</sup>  |
| <b>CERTIFICATIONS</b>   | Non testé  |
| <b>NOTES</b>            | Fire retardant<br>Heavy traffic<br>Large width                   |
| <b>INFORMATION</b>      | Production tolerance +/- 3 to 5%<br>Natural irregularities       |

## 5 Colors



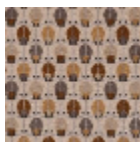
FT339001  
BLEU DU NIL



FT339002  
PALMIER



FT339003  
ORGE



FT339004  
ARGILE



FT339005  
BLÉ