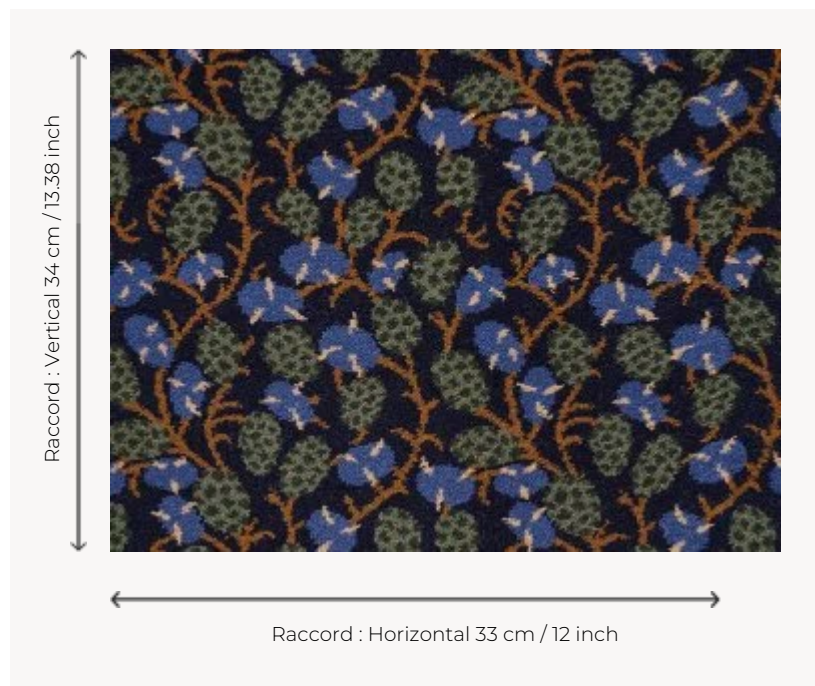


FT341001 SENNEFER

Loosely based on the ceiling designs of the tomb of Sennefer, mayor of the city of Thebes (now called Luxor), this carpet features generous vines covered with bunches of grapes and large leaves. Sennefer's tomb is known as the "Tomb of the Vines". Woven in large width for a carpet resistant to the most intensive uses.

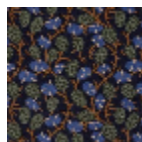
FT341001 - BLEU DU NIL



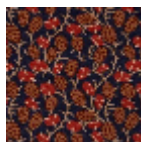
Pierre Frey

PERFORMANCE	TRAFIC INTENSE - NON FEU
FAMILY	Carpet
ARTIST	Musee Du Louvre
COLLABORATION	Musée du Louvre
TECHNIQUE	Fast-Track woven Axminster
USE	Intensive traffic
COMPOSITION	80 % Wool - 20 % Polyamide
DENSITY	7x10
PILE	Cut pile
ASPECT	Mat
REPEAT	H: 33 cm - 12,00 inch V: 34 cm - 13,38 inch Straight repeat
NUMBER OF COLORS	3
PILE HEIGHT	7.40 mm 0.29 inch
TOTAL HEIGHT	10.10 mm 0.39 inch
TOTAL WEIGHT	7.18 oz/ft ²
CERTIFICATIONS	Passé
NOTES	Fire retardant Heavy traffic Large width
INFORMATION	Production tolerance +/- 3 to 5% Natural peeling

3 Colors



FT341001
BLEU DU NIL



FT341002
GRENAT



FT341003
DESERT