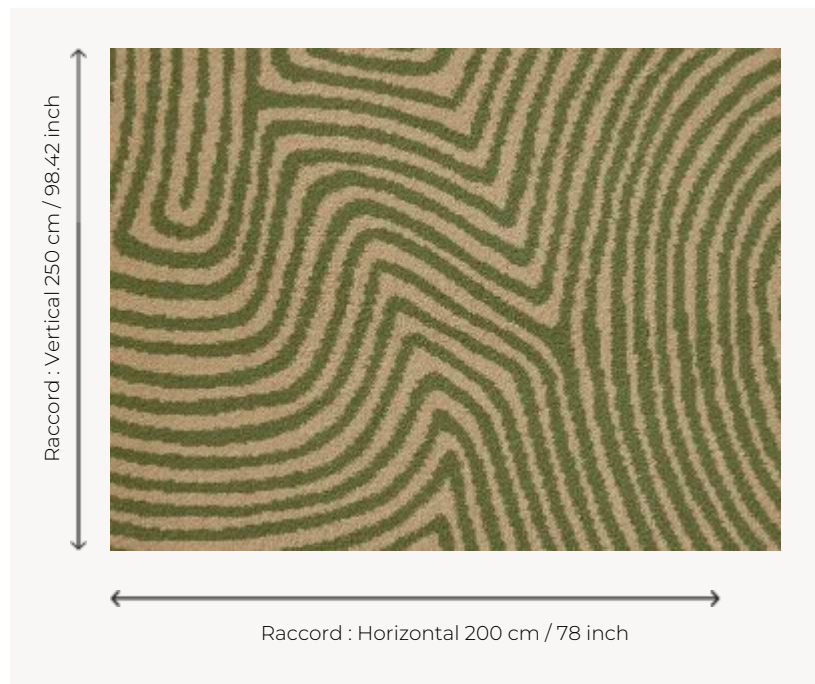


FT415003 TONGA AXMINSTER

This Axminster carpet weaves a pattern reminiscent of the sand paintings of Aboriginal art, in a quality specially designed for high traffic.

FT415003 - Lichen



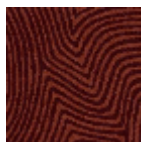
Pierre Frey

PERFORMANCE	TRAFIC INTENSE - NON FEU
FAMILY	Carpet
TECHNIQUE	Fast-Track woven Axminster
USE	Intensive traffic
COMPOSITION	80 % Wool - 20 % Polyamide
DENSITY	7x10
PILE	Cut pile
ASPECT	Mat
REPEAT	H: 200 cm - 78,00 inch V: 250 cm - 98,42 inch Straight repeat
NUMBER OF COLORS	2
PILE HEIGHT	7.40 mm 0.29 inch
TOTAL HEIGHT	10.10 mm 0.39 inch
TOTAL WEIGHT	7.18 oz/ft ²
CERTIFICATIONS	Passé
NOTES	Fire retardant Heavy traffic Large width
INFORMATION	Production tolerance +/- 3 to 5% Natural peeling

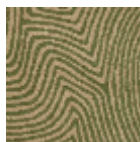
3 Colors



FT415001
Sable



FT415002
Brique



FT415003
Lichen