

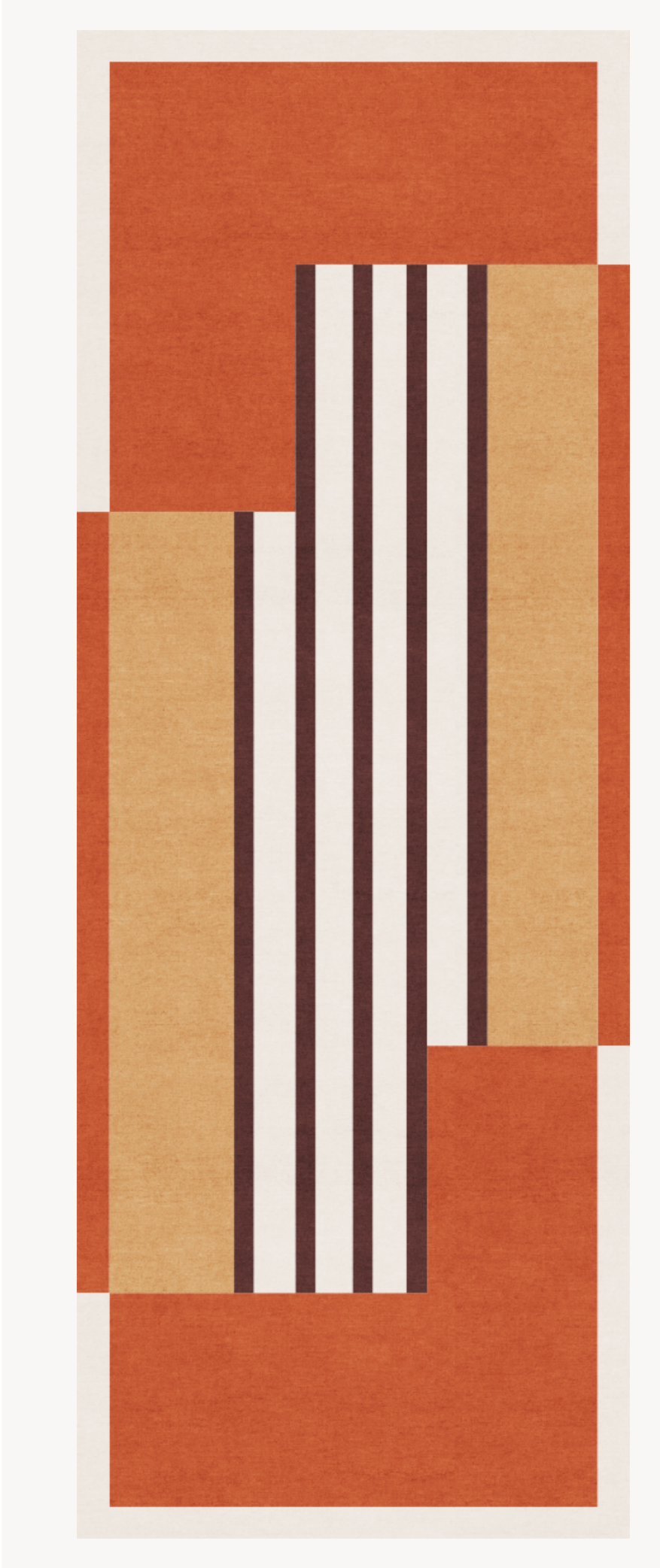


FT422001 MILAN

This original rug composition was created by the textile designer Elise Djo-Bourgeois in the early 1930s. Hand-tufted in a New Zealand wool pile, it combines graphic modernity and timelessness through a play of cleverly interwoven shapes.

FT422001 - TOMATE

Pierre Frey



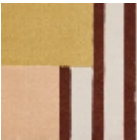
PERFORMANCE	TRAFIC INTENSE - NON FEU
FAMILY	Carpet Rug
ARTIST	Élise Djo-Bourgeois
TECHNIQUE	Hand-tuft
USE	Intensive traffic Stairs
COMPOSITION	100 % Wool 380Tex
DENSITY	88
PILE	Cut pile
ASPECT	Mat
NUMBER OF COLORS	4
PILE HEIGHT	10.00 mm 0.39 inch
TOTAL HEIGHT	13.00 mm 0.51 inch
TOTAL WEIGHT	17.77 oz/ft²
CERTIFICATIONS	Passé
NOTES	100% handmade Fire retardant Heavy traffic 100% natural fiber
INFORMATION	Production tolerance +/- 3 to 5% Natural irregularities Natural peeling

3 Colors

FT422_HT_002
OR ROSE



FT422001
TOMATE



FT422002
OR ROSE