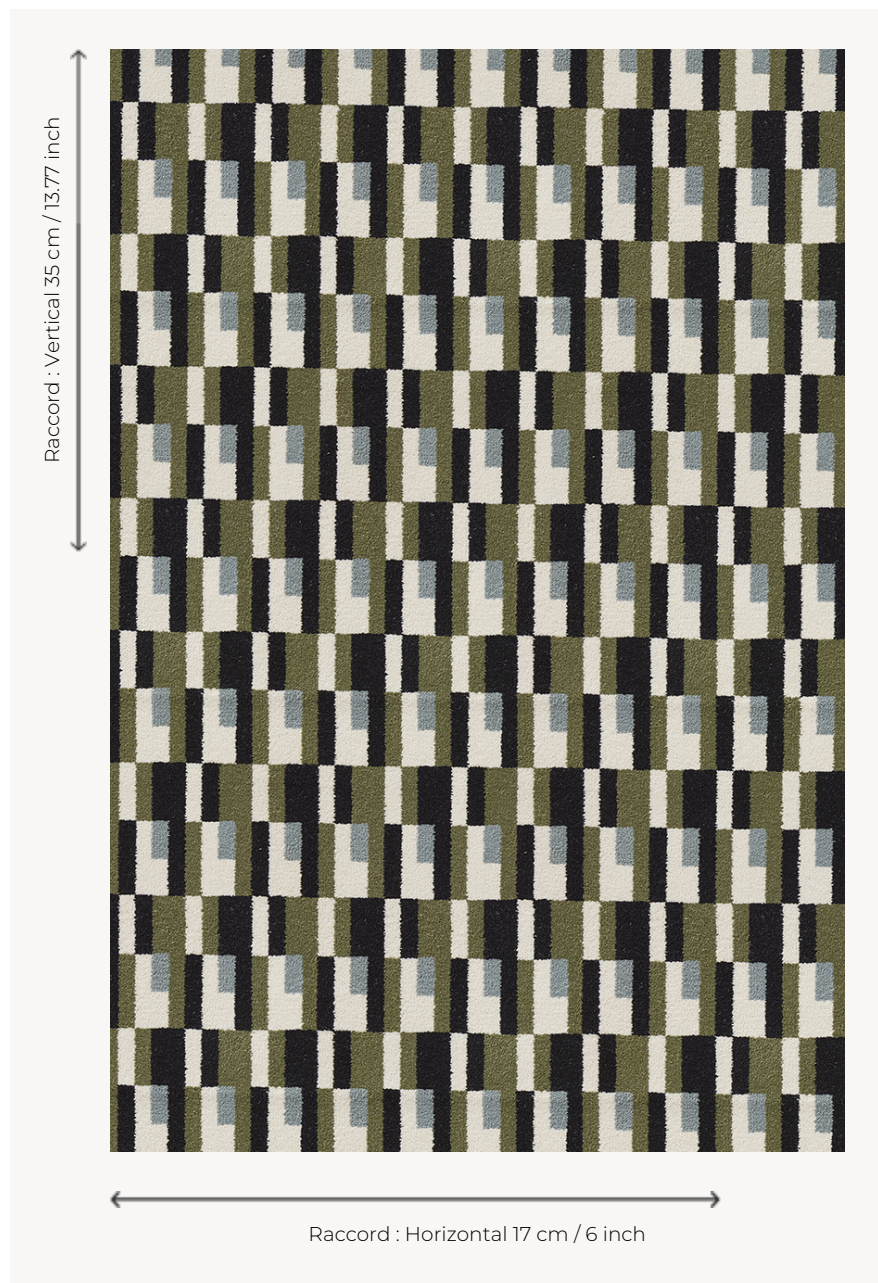


## FT424001 MONTEVIDEO

This timeless and modernist design was created by the textile designer Elise Djo-Bourgeois circa 1927. It features geometric interlocking patterns. Reinterpreted in an Axminster jacquard carpet, a weaving technique specific for high traffic, this graphic pattern is available in two colors.

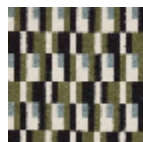
### FT424001 - NOIR/VERT



### Pierre Frey

<b>PERFORMANCE</b>	TRAFIC INTENSE - NON FEU
<b>FAMILY</b>	Carpet
<b>ARTIST</b>	Élise Djo-Bourgeois
<b>TECHNIQUE</b>	Fast-Track woven Axminster
<b>USE</b>	Intensive traffic
<b>COMPOSITION</b>	80 % Wool - 20 % Polyamide
<b>DENSITY</b>	7x10
<b>PILE</b>	Cut pile
<b>ASPECT</b>	Mat
<b>REPEAT</b>	H: 17 cm - 6,00 inch V: 35 cm - 13,77 inch Straight repeat
<b>NUMBER OF COLORS</b>	5
<b>PILE HEIGHT</b>	7.40 mm 0.29 inch
<b>TOTAL HEIGHT</b>	10.10 mm 0.39 inch
<b>TOTAL WEIGHT</b>	7.18 oz/ft <sup>2</sup>
<b>CERTIFICATIONS</b>	Passé
<b>NOTES</b>	Fire retardant Heavy traffic
<b>INFORMATION</b>	Production tolerance +/- 3 to 5% Natural irregularities

## 2 Colors



FT424001  
NOIR/VERT



FT424002  
BRUN