

FT448002 COENDOU

Irregular and contemporary stripes evoking multiple forms of craftsmanship, COENDOU is woven in Axminster and available in two colorways.

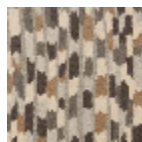
FT448002 - RIVIERE



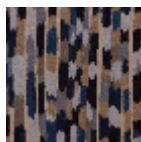
Pierre Frey

| | |
|-------------------------|-------------------------------------------------------------------------------|
| PERFORMANCE | TRAFIC INTENSE - NON FEU |
| FAMILY | Carpet |
| TECHNIQUE | Fast-Track woven Axminster |
| USE | Intensive traffic Stairs |
| COMPOSITION | 80 % Wool - 20 % Polyamide |
| DENSITY | 7x10 |
| PILE | Cut pile |
| ASPECT | Mat |
| REPEAT | H: 67 cm - 26,00 inch V: 179 cm - 70,47 inch Straight repeat |
| NUMBER OF COLORS | 8 |
| PILE HEIGHT | 7.40 mm 0.29 inch |
| TOTAL HEIGHT | 10.10 mm 0.39 inch |
| TOTAL WEIGHT | 7.18 oz/ft ² |
| NOTES | Fire retardant Heavy traffic Large width |
| INFORMATION | Production tolerance +/- 3 to 5% Natural irregularities Natural peeling |

2 Colors



FT448001
NATUREL



FT448002
RIVIERE