

## FT453001 KATABIRA

KATABIRA is inspired by the cameos of textile motifs found in Japanese prints. Tufted in wool and bamboo, the alternating matte and shiny materials serve the design and bring to life the interplay of stripes, checks and small motifs.

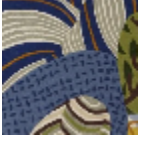
### FT453001 - MULTICOLORE



### Pierre Frey

<b>FAMILY</b>	Rug
<b>TECHNIQUE</b>	Hand-tuft
<b>USE</b>	Moderate traffic
<b>COMPOSITION</b>	86 % Wool 380Tex - 14 % Bamboo viscose
<b>DENSITY</b>	88 Oz/y <sup>2</sup>
<b>PILE</b>	Cut pile
<b>ASPECT</b>	Shiny - Mat
<b>NUMBER OF COLORS</b>	12
<b>PILE HEIGHT</b>	10.00 mm 0.39 inch
<b>TOTAL HEIGHT</b>	13.00 mm 0.51 inch
<b>TOTAL WEIGHT</b>	18.24 oz/ft <sup>2</sup>
<b>NOTES</b>	100% handmade 100% natural fiber
<b>INFORMATION</b>	Production tolerance +/- 3 to 5% Natural irregularities Natural peeling

# 1 Colors



FT453001  
MULTICOLOR  
E