

## FT478001 CALIFORNIE

"CALIFORNIE" is a low-warp tapestry created by monk and artist Dom Robert (1907-1997), and woven in 1958 by the Goubely workshop in Aubusson, France. A highly stylized composition from the "Bird Trees" tapestry series created by Dom Robert in the 1950s, "CALIFORNIE" plunges us into the midst of the flight of variegated birds flying over or hiding in clumps of plants, recalling the lushness and freshness of Persian miniatures. Redesigned as a rug, the artist's original hand is translated into hand-tuft, in wool loops on a background of New Zealand wool pile.

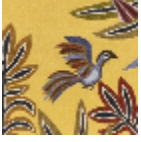
### FT478001 - SOLEIL



### Pierre Frey

<b>FAMILY</b>	Rug
<b>ARTIST</b>	Dom Robert © Abbaye D'En Calcat
<b>TECHNIQUE</b>	Hand-tuft
<b>USE</b>	Moderate traffic Stairs
<b>COMPOSITION</b>	100 % Wool 380Tex
<b>DENSITY</b>	88 Oz/y2
<b>PILE</b>	Cut pile Loop pile Tip shearing
<b>ASPECT</b>	Mat
<b>NUMBER OF COLORS</b>	15
<b>PILE HEIGHT</b>	7.00 mm 0.28 inch
<b>TOTAL HEIGHT</b>	10.00 mm 0.39 inch
<b>TOTAL WEIGHT</b>	17.77 oz/ft <sup>2</sup>
<b>NOTES</b>	100% handmade 100% natural fiber
<b>INFORMATION</b>	Production tolerance +/- 3 to 5% Natural irregularities Natural peeling

# 1 Colors



FT478001  
SOLEIL