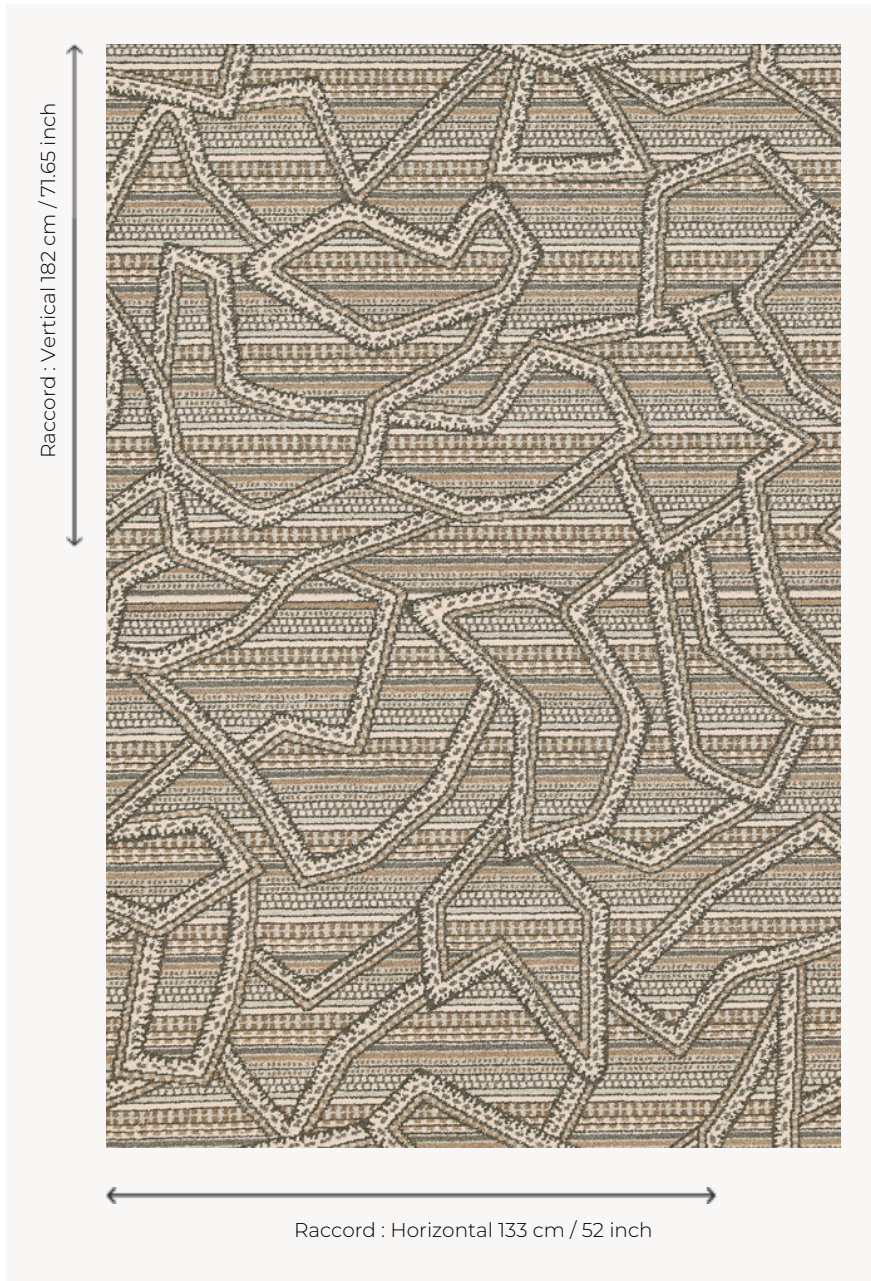


## FT490001 NAZCA

NAZCA is a carpet adaptation of the eponym jacquard in Fast-track Axminster weaving. Multiple stripes and irregular shapes combine to form a rich graphic composition.

### FT490001 - PERLE



### Pierre Frey

<b>PERFORMANCE</b>	NON FEU
<b>FAMILY</b>	Carpet
<b>TECHNIQUE</b>	Fast-Track woven Axminster
<b>USE</b>	Moderate traffic Stairs
<b>COMPOSITION</b>	100 % Natural Wool
<b>DENSITY</b>	7x10
<b>PILE</b>	Cut pile
<b>ASPECT</b>	Mat
<b>REPEAT</b>	H: 133 cm - 52,00 inch V: 182 cm - 71,65 inch Straight repeat
<b>NUMBER OF COLORS</b>	6
<b>PILE HEIGHT</b>	7.40 mm 0.29 inch
<b>TOTAL HEIGHT</b>	10.10 mm 0.39 inch
<b>TOTAL WEIGHT</b>	7.18 oz/ft <sup>2</sup>
<b>NOTES</b>	Fire retardant Heavy traffic Large width
<b>INFORMATION</b>	Production tolerance +/- 3 to 5% Natural irregularities Natural peeling

1 Colors



FT490001  
PERLE