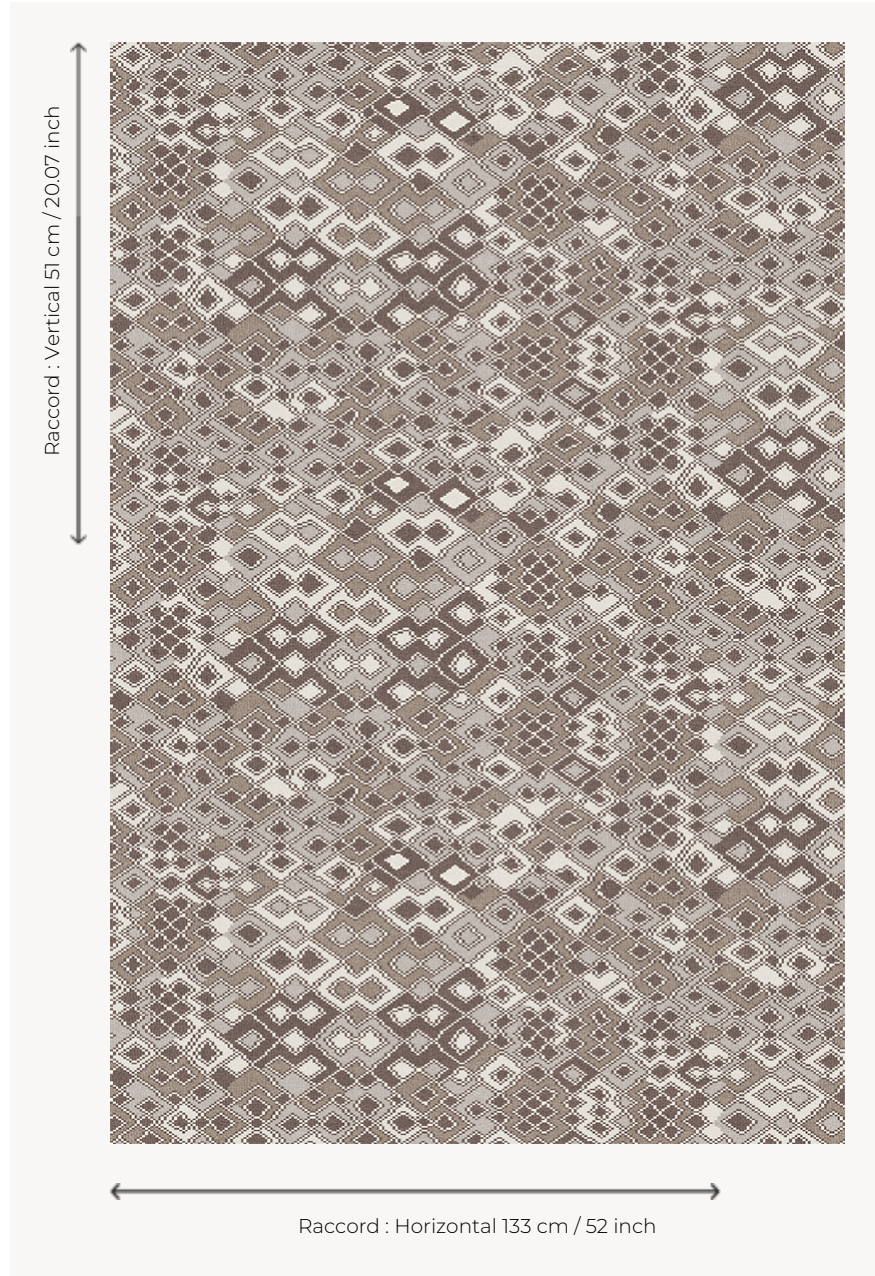


# FT492001 KARAKOUM

Developed as a Fast-track Axminster woven carpet, the KARAKOUM design reveals a vibrant pattern inspired by Kasai rafia embroideries, also called Kuba velvet because of thread poms evoking the cut pile of velvet. Developed in 3 colorways, it is ideal for wide widths.

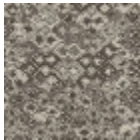
## FT492001 - PERLE



## Pierre Frey

<b>PERFORMANCE</b>	TRAFIC INTENSE - NON FEU
<b>FAMILY</b>	Carpet
<b>TECHNIQUE</b>	Fast-Track woven Axminster
<b>USE</b>	Intensive traffic Stairs
<b>COMPOSITION</b>	80 % Wool - 20 % Polyamide
<b>DENSITY</b>	7x10
<b>PILE</b>	Cut pile
<b>ASPECT</b>	Mat
<b>REPEAT</b>	H: 133 cm - 52,00 inch V: 51 cm - 20,07 inch Straight repeat
<b>NUMBER OF COLORS</b>	5
<b>PILE HEIGHT</b>	7.40 mm 0.29 inch
<b>TOTAL HEIGHT</b>	10.10 mm 0.39 inch
<b>TOTAL WEIGHT</b>	7.18 oz/ft²
<b>NOTES</b>	Fire retardant Heavy traffic Large width
<b>INFORMATION</b>	Production tolerance +/- 3 to 5% Natural irregularities Natural peeling

3 Colors



FT492001  
PERLE



FT492002  
OASIS



FT492003  
SABLE