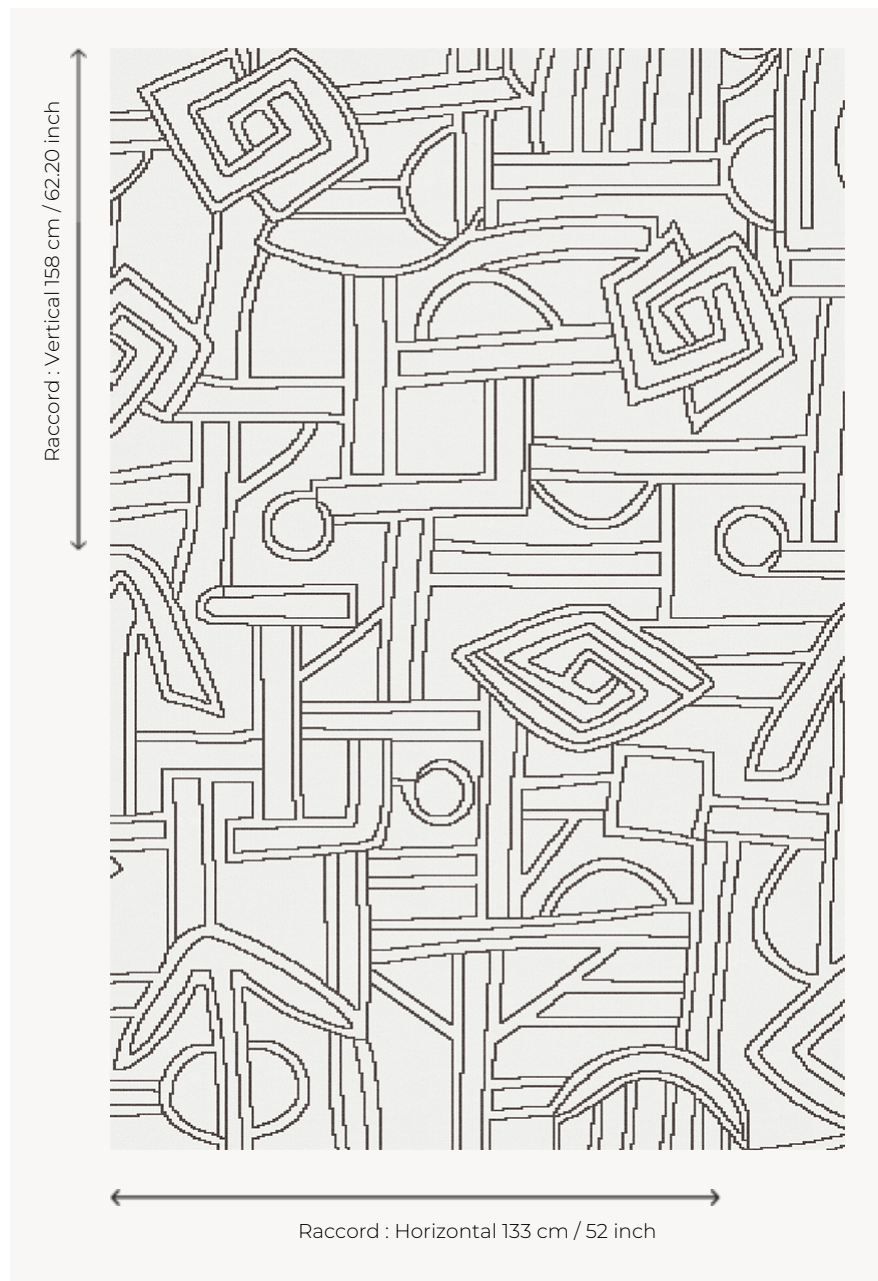


FT495002 WADI

WADI is a graphic and timeless design in natural speckled shades. It is available in two colorways, including a tone-on-tone beige monochrome.

FT495002 - PERLE



Pierre Frey

PERFORMANCE TRAFIC INTENSE - NON FEU

FAMILY Carpet

TECHNIQUE Fast-Track woven Axminster

USE Intensive traffic
Stairs

COMPOSITION 80 % Wool - 20 % Polyamide

DENSITY 7x10

PILE Cut pile

ASPECT Mat

REPEAT H: 133 cm - 52,00 inch
V: 158 cm - 62,20 inch
Straight repeat

NUMBER OF COLORS 2

PILE HEIGHT 7.40 mm
0.29 inch

TOTAL HEIGHT 10.10 mm
0.39 inch

TOTAL WEIGHT 7.18 oz/ft²

NOTES Fire retardant
Heavy traffic
Large width

INFORMATION Production tolerance +/- 3 to 5%
Natural irregularities
Natural peeling

2 Colors



FT495001
DUNES



FT495002
PERLE