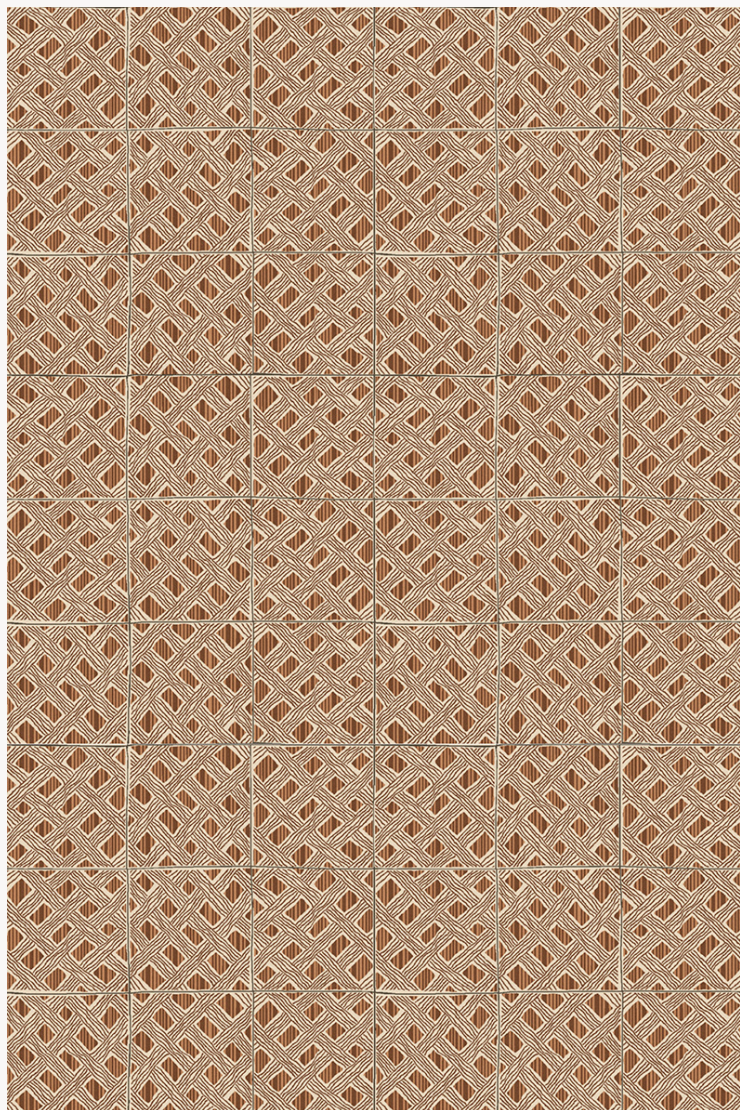


# LT101004 BEHANZIN

Reproduction of the pattern of a Kuba velvet from Congo. Hand-tufted in New Zealand wool and silk.

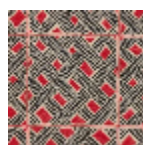
## LT101004 - Caramel



## Le manach

<b>FAMILY</b>	Carpet Rug
<b>TECHNIQUE</b>	Hand-tuft
<b>USE</b>	Moderate traffic
<b>COMPOSITION</b>	75 % Wool 380Tex - 25 % Silk
<b>DENSITY</b>	88
<b>PILE</b>	Cut pile
<b>ASPECT</b>	Shiny
<b>REPEAT</b>	Half drop repeat
<b>NUMBER OF COLORS</b>	3
<b>PILE HEIGHT</b>	10.00 mm 0.39 inch
<b>TOTAL HEIGHT</b>	13.00 mm 0.51 inch
<b>TOTAL WEIGHT</b>	17.77 oz/ft <sup>2</sup>
<b>CERTIFICATIONS</b>	Non testé
<b>NOTES</b>	100% handmade 100% natural fiber
<b>INFORMATION</b>	Production tolerance +/- 3 to 5% Natural irregularities Natural peeling

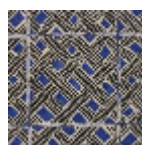
## 4 Colors



LT101001  
Groseille



LT101002  
Poudre



LT101003  
Bleu



LT101004  
Caramel