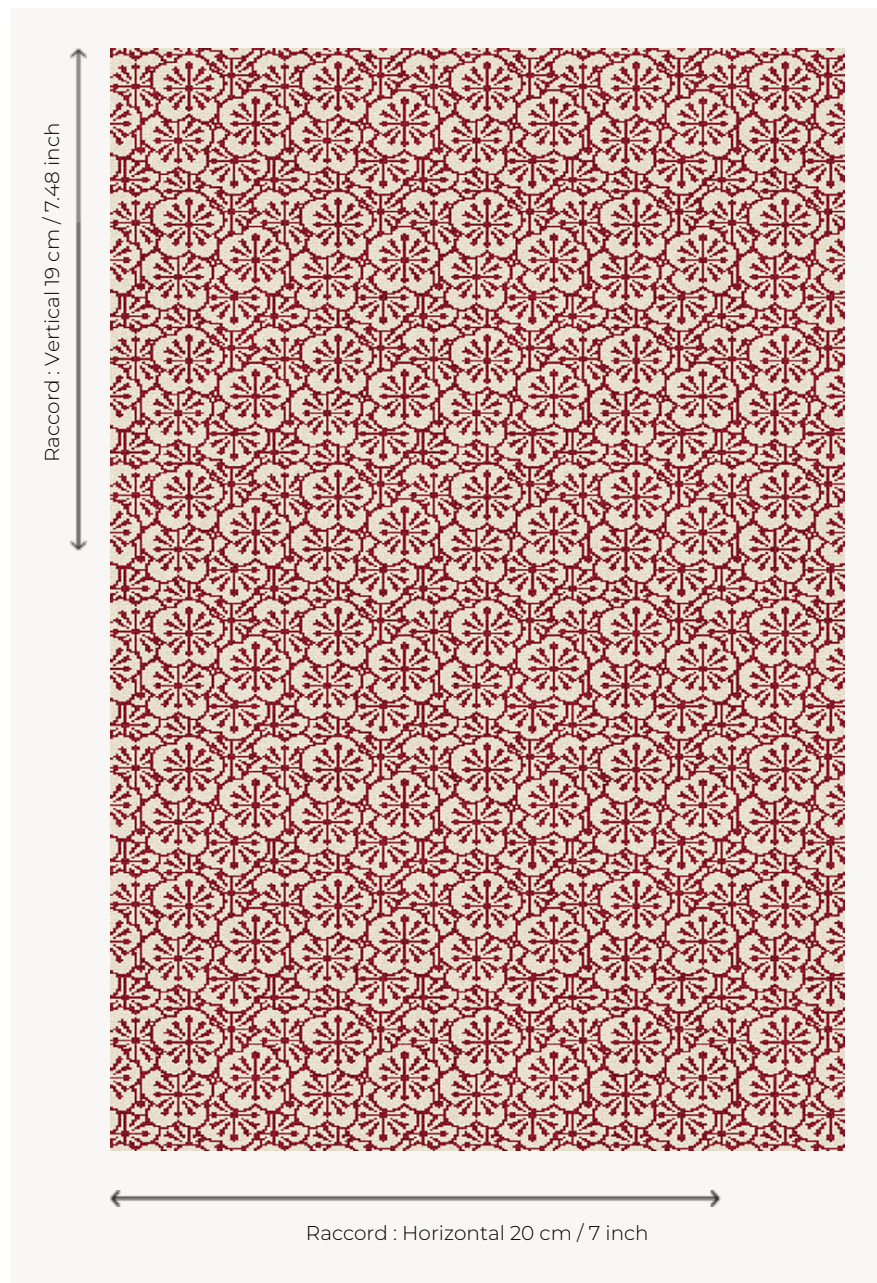


## LT109001 POMMIERS

Japanese influence for this pattern created around 1937 by Armand-Albert Rateau, a great decorator of the first half of the 20th century. Axminster woven carpet.

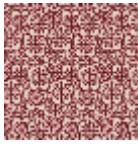
### LT109001 - Coquelicot



### Le manach

|                         |   |
|-------------------------|---|
| <b>PERFORMANCE</b>      | TRAFIC INTENSE - NON FEU  |
| <b>FAMILY</b>           | Carpet  |
| <b>TECHNIQUE</b>        | Fast-Track woven Axminster                                      |
| <b>USE</b>              | Intensive traffic   |
| <b>COMPOSITION</b>      | 80 % Wool - 20 % Polyamide                                      |
| <b>DENSITY</b>          | 7x10  |
| <b>PILE</b>             | Cut pile  |
| <b>ASPECT</b>           | Mat   |
| <b>REPEAT</b>           | H: 20 cm - 7,00 inch<br>V: 19 cm - 7,48 inch<br>Straight repeat |
| <b>NUMBER OF COLORS</b> | 2   |
| <b>PILE HEIGHT</b>      | 7.30 mm<br>0.29 inch  |
| <b>TOTAL HEIGHT</b>     | 10.00 mm<br>0.39 inch   |
| <b>TOTAL WEIGHT</b>     | 7.06 oz/ft <sup>2</sup>   |
| <b>CERTIFICATIONS</b>   | Passé   |
| <b>NOTES</b>            | Fire retardant<br>Heavy traffic<br>Large width                  |
| <b>INFORMATION</b>      | Production tolerance +/- 3 to 5%<br>Natural peeling             |

## 5 Colors



LT109001  
Coquelicot



LT109002  
Vert



LT109003  
Noir/blanc

LT109\_AX\_00F  
T

LT109\_FT\_0021