

LT117001 BEHANZIN WILTON

Reproduction in Wilton weaving of the pattern of a Kuba velvet from Congo, so called because of the use of looped raffia threads, a distant reminiscence of the loops found in Italian velvets.

LT117001 - Camel

Le manach

Raccord : Vertical 42 cm / 16.53 inch

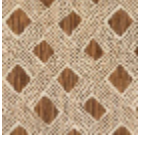


Raccord : Horizontal 70 cm / 27 inch



PERFORMANCE	NON FEU
FAMILY	Carpet
TECHNIQUE	Woven Wilton
USE	Moderate traffic Stairs
COMPOSITION	20 % Polyamide
PILE	Cut pile
ASPECT	Mat
REPEAT	H: 70 cm - 27,00 inch V: 42 cm - 16,53 inch Straight repeat
NUMBER OF COLORS	3
PILE HEIGHT	5.40 mm 0.21 inch
TOTAL HEIGHT	8.00 mm 0.31 inch
TOTAL WEIGHT	7.47 oz/ft ²
CERTIFICATIONS	Passé
NOTES	Fire retardant
INFORMATION	Production tolerance +/- 3 to 5% Natural irregularities Natural peeling No sampling

1 Colors



LT117001
Camel