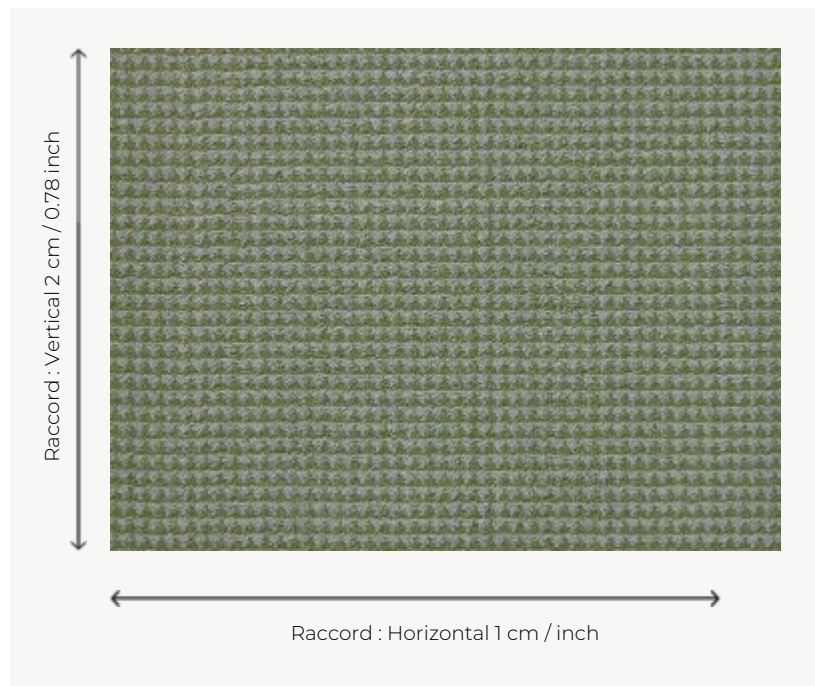


LT124002 LES TRIANGLES AXMINSTER

Axminster weaving of a small geometric pattern that brings an elegant and discreet touch to a contemporary decoration.

LT124002 - Vert d'eau

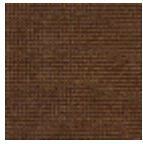


Le manach

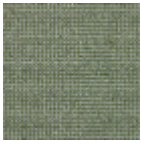
PERFORMANCE	TRAFIC INTENSE - NON FEU
FAMILY	Carpet
TECHNIQUE	Fast-Track woven Axminster
USE	Intensive traffic
COMPOSITION	80 % Wool - 20 % Polyamide
DENSITY	7x10
PILE	Cut pile
ASPECT	Mat
REPEAT	H: 1 cm - V: 2 cm - 0,78 inch Straight repeat
NUMBER OF COLORS	3
PILE HEIGHT	7.40 mm 0.29 inch
TOTAL HEIGHT	10.10 mm 0.39 inch
TOTAL WEIGHT	7.18 oz/ft ²
CERTIFICATIONS	Passé
NOTES	Fire retardant Heavy traffic Large width
INFORMATION	Production tolerance +/- 3 to 5% Natural peeling

4 Colors

LT124_AX_002
FT



LT124001
BRONZE/VIOL
ET



LT124002
Vert d'eau



LT124003
Jaune