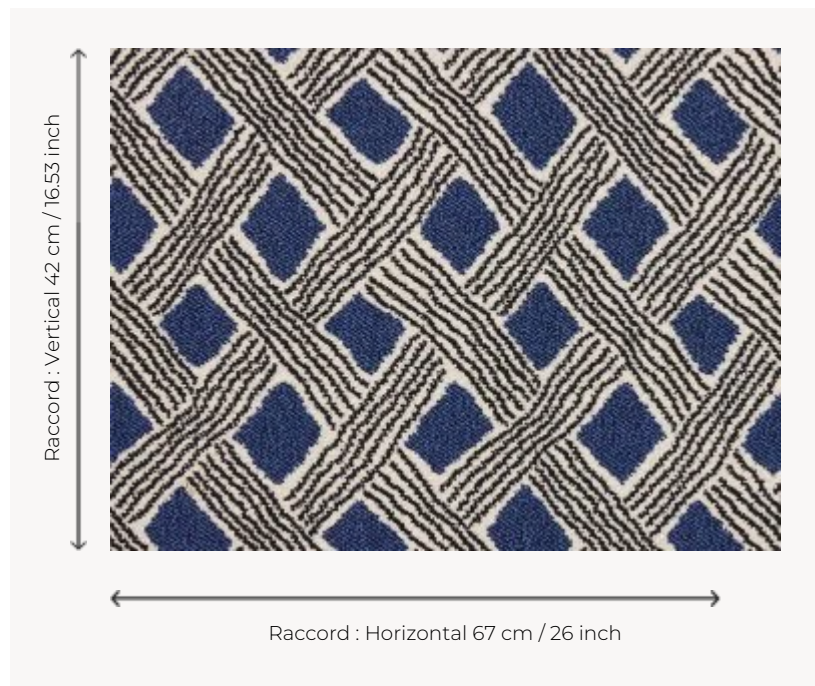


LT127001 BEHANZIN AXMINSTER

Axminster woven reproduction of the pattern of a Kuba velvet from Congo, so called because of the use of looped raffia threads, a distant reminiscence of the loops found in Italian velvets.

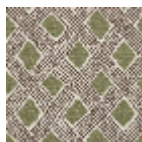
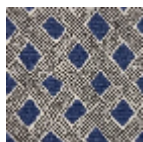
LT127001 - Bleu



Le manach

PERFORMANCE	TRAFIC INTENSE - NON FEU
FAMILY	Carpet
TECHNIQUE	Fast-Track woven Axminster
USE	Intensive traffic
COMPOSITION	80 % Wool - 20 % Polyamide
DENSITY	7x10
PILE	Cut pile
ASPECT	Mat
REPEAT	H: 67 cm - 26,00 inch V: 42 cm - 16,53 inch Straight repeat
NUMBER OF COLORS	3
PILE HEIGHT	7.40 mm 0.29 inch
TOTAL HEIGHT	10.10 mm 0.39 inch
TOTAL WEIGHT	7.18 oz/ft ²
CERTIFICATIONS	Passé
NOTES	Fire retardant Heavy traffic Large width
INFORMATION	Production tolerance +/- 3 to 5% Natural peeling

3 Colors



LT127_FT_0012

LT127001

Bleu

LT127002

Vert