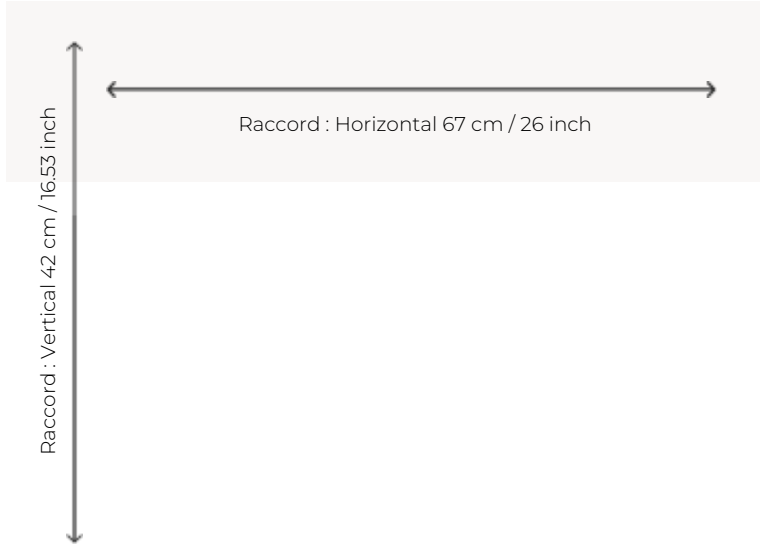


## LT127\_FT\_0012 BEHANZIN AXMINSTER

Axminster woven reproduction of the pattern of a Kuba velvet from Congo, so called because of the use of looped raffia threads, a distant reminiscence of the loops found in Italian velvets.

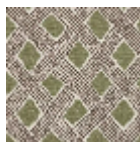
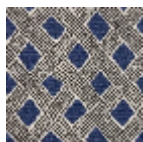
### LT127\_FT\_0012 -



### Le manach

<b>PERFORMANCE</b>	TRAFIC INTENSE - NON FEU
<b>FAMILY</b>	Carpet
<b>TECHNIQUE</b>	Fast-Track woven Axminster
<b>USE</b>	Intensive traffic
<b>COMPOSITION</b>	80 % Wool - 20 % Polyamide
<b>DENSITY</b>	7x10
<b>PILE</b>	Cut pile
<b>ASPECT</b>	Mat
<b>REPEAT</b>	H: 67 cm - 26,00 inch V: 42 cm - 16,53 inch Straight repeat
<b>NUMBER OF COLORS</b>	3
<b>PILE HEIGHT</b>	7.40 mm 0.29 inch
<b>TOTAL HEIGHT</b>	10.10 mm 0.39 inch
<b>TOTAL WEIGHT</b>	7.18 oz/ft <sup>2</sup>
<b>CERTIFICATIONS</b>	Passé
<b>NOTES</b>	Fire retardant Heavy traffic Large width
<b>INFORMATION</b>	Production tolerance +/- 3 to 5% Natural peeling

# 3 Colors



LT127\_FT\_0012

LT127001

Bleu

LT127002

Vert