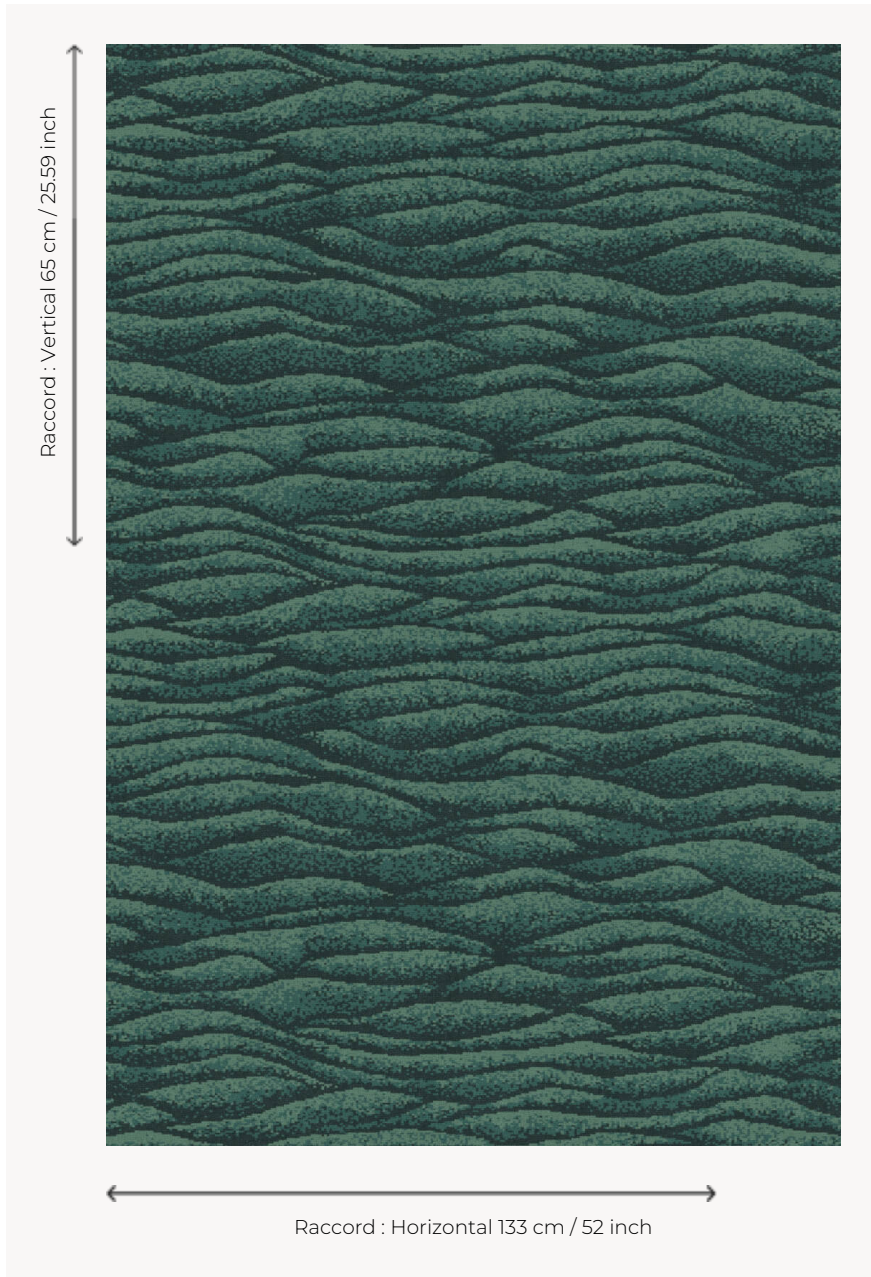


## OT115002 WAVES

With its graphic evocation of waves, this beautiful three-colored carpet creates a pleasant relief through its refined color scheme.

### OT115002 - CYPRÈS



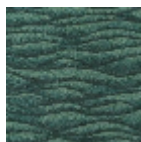
### Boussac

<b>PERFORMANCE</b>	TRAFIC INTENSE - NON FEU
<b>FAMILY</b>	Carpet
<b>TECHNIQUE</b>	Woven Axminster
<b>USE</b>	Intensive traffic
<b>COMPOSITION</b>	80 % Wool - 20 % Polyamide
<b>DENSITY</b>	7x10
<b>PILE</b>	Cut pile
<b>ASPECT</b>	Mat
<b>REPEAT</b>	H: 133 cm - 52,00 inch V: 65 cm - 25,59 inch Straight repeat
<b>NUMBER OF COLORS</b>	3
<b>PILE HEIGHT</b>	7.40 mm 0.29 inch
<b>TOTAL HEIGHT</b>	10.10 mm 0.39 inch
<b>TOTAL WEIGHT</b>	7.18 oz/ft <sup>2</sup>
<b>CERTIFICATIONS</b>	Passé
<b>NOTES</b>	Fire retardant Heavy traffic Large width
<b>INFORMATION</b>	Production tolerance +/- 3 to 5% Natural peeling

## 3 Colors



OT115001  
Anthracite



OT115002  
CYPRES



OT115003  
Ocean