

TEST REPORT NO:129615

Date:19 May 2017

**PIERRE FREY SAS**  
**47 RUE DES PETITS CHAMPS**  
**75001 PARIS**  
**FRANCE**  
**FRANCE**

The following sample(s) was/were submitted and identified by/on behalf of the client as:

Retailer	Not Specified
Description of article	Medium
Retailer style number	F3211
Retailer Standard Number	Unknown
Order No./ Buyer	20160511
Quality/Fibre Composition	100% Cotton
Date Sample(s) Received:	15 May 2017

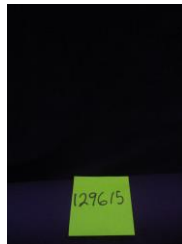
#### Test

Schedule 4 Part I Cigarette Test  
Schedule 5 Part I Match Test  
Water Soak  
BS5852 Ignition Source 5 (cribs)  
BS EN 1021-1 Ignition Source 0 (Cigarette) Incl water soak  
BS EN 1021-2 Ignition Source 1 (match) Incl water soak

#### Remarks

Tests as requested by the customer

Signature



For and on behalf of  
SGS Leicester Ltd.

All samples are conditioned to ISO 139 where conditioning is required (unless otherwise stated)

This document is issued by the Company under its General Conditions of Service accessible at [www.sgs.com/terms\\_and\\_conditions.htm](http://www.sgs.com/terms_and_conditions.htm) and, for electronic format documents, subject to Terms and Conditions for Electronic Documents at <http://www.sgs.com/en/Terms-and-Conditions.aspx>. Attention is drawn to the limitation of liability, indemnification and jurisdiction issues defined therein. Any holder of this document is advised that information contained hereon reflects the Company's findings at the time of its intervention only and within the limits of Client's instructions, if any. The Company's sole responsibility is to its Client and this document does not exonerate parties to a transaction from exercising all their rights and obligations under the transaction documents. This document cannot be reproduced except in full, without prior written approval of the Company. Any unauthorized alteration, forgery or falsification of the content or appearance of this document is unlawful and offenders may be prosecuted to the fullest extent of the law." Unless otherwise stated the results shown in this test report refer only to the sample(s) tested and such sample(s) are retained for 90 days only

**Customer:** Pierre Frey SAS      **Test Report No:** 129615

**EN 1021-1-2:2014**

**Test Request**

The sample supplied is a woven fabric with pile and has been tested to EN 1021-1-2:2014, Smouldering Cigarette and Match Ignition, 0+1.

**Fibre Identification**

Reputed Fibre Composition: 100% cotton

**Pre-Treatment**

The sample was cleansed using a water-soak procedure at 40°C ± 1°C as described in Annex D and line dried.

**Conditioning**

The sample has been tested after a period of 24 hours of conditioning in a relative humidity of (50±5) % and a temperature of (23±2) °C.

**Comments on Test Results**

The fabric sample supplied meets the requirements of EN 1021-1:2014 Smouldering Cigarette.

The fabric sample supplied does not meet the requirements of EN 1021-2:2014 Match test due to the duration of flaming exceeded 120 seconds after the removal of the burner tube.

**Results**

'The following test results relate only to the ignitability if the combination of materials under the particular conditions of test; they are not intended as a means of assessing the full potential fire hazard if the materials in use.'

**Cigarette Test**

Pass criteria:

When two samples are tested no progressive smouldering or flaming is to be observed within 1 hour of placement of the cigarette. If the cigarette fails to smoulder to its complete length, the test is repeated in a new position not less than 50mm from the previous damage. No progressive smouldering is to be present in the final examination.

Cigarette Ignition			
Specimen Number	1	2	3
Smouldering time of the Cigarette	22 min 34 sec	22 min 46 sec	23 min 12 sec
Smouldering	NPS	NPS	NPS
Flaming	N	N	N
Smoking	N	N	N
After Glow	N	N	N
Cover Splitting	N	N	N
<b>Final Examination</b>	<b>P</b>	<b>P</b>	<b>P</b>

This document is issued by the Company under its General Conditions of Service accessible at [www.sgs.com/terms\\_and\\_conditions.htm](http://www.sgs.com/terms_and_conditions.htm) and, for electronic format documents, subject to Terms and Conditions for Electronic Documents at <http://www.sgs.com/en/Terms-and-Conditions.aspx>. Attention is drawn to the limitation of liability, indemnification and jurisdiction issues defined therein. Any holder of this document is advised that information contained hereon reflects the Company's findings at the time of its intervention only and within the limits of Client's instructions, if any. The Company's sole responsibility is to its Client and this document does not exonerate parties to a transaction from exercising all their rights and obligations under the transaction documents. This document cannot be reproduced except in full, without prior written approval of the Company. Any unauthorized alteration, forgery or falsification of the content or appearance of this document is unlawful and offenders may be prosecuted to the fullest extent of the law." Unless otherwise stated the results shown in this test report refer only to the sample(s) tested and such sample(s) are retained for 90 days only

**Customer:** Pierre Frey SAS      **Test Report No:** 129615

**Match Test**

Pass Criteria:

Disregard flaming or progressive smouldering which ceases within 120seconds of the removal of the burner tube. Disregard smoking and afterglow which ceases within 15minutes of the removal of the burner tube as per British Standards committee CCM/44.No progressive smouldering is to be present in the final examination.

Specimen Number	1	Time
Smouldering	N/A	-
Flaming	Y	>120 sec
Smoking	Y	>120 sec
Afterglow	N	-
Cover split	N	
<b>Final Examination</b>	F	

Please note that the fabric sample was tested over Combustion Modified Foam (CMHR) with a density of 35kg per M<sup>3</sup>.

*Key*

**Y= Yes      N=No      N/A= Not Applicable**  
**P=Pass      F=Fail      DNS= Did Not Smoulder**  
**NPS = Non progressive smouldering**  
**PS = Progressive smouldering within 1 hour**

This document is issued by the Company under its General Conditions of Service accessible at [www.sgs.com/terms\\_and\\_conditions.htm](http://www.sgs.com/terms_and_conditions.htm) and, for electronic format documents, subject to Terms and Conditions for Electronic Documents at <http://www.sgs.com/en/Terms-and-Conditions.aspx>. Attention is drawn to the limitation of liability, indemnification and jurisdiction issues defined therein. Any holder of this document is advised that information contained hereon reflects the Company's findings at the time of its intervention only and within the limits of Client's instructions, if any. The Company's sole responsibility is to its Client and this document does not exonerate parties to a transaction from exercising all their rights and obligations under the transaction documents. This document cannot be reproduced except in full, without prior written approval of the Company. Any unauthorized alteration, forgery or falsification of the content or appearance of this document is unlawful and offenders may be prosecuted to the fullest extent of the law." Unless otherwise stated the results shown in this test report refer only to the sample(s) tested and such sample(s) are retained for 90 days only

**Customer:** Pierre Frey SAS      **Test Report No:** 129615

**Schedule 4 The Cigarette Test Part 1 and Schedule 5 The Match Test Part 1 in accordance with BS 5852: Part 1: 1979**

**Test Requested**

The sample supplied is a Woven with pile fabric and has been tested to the flammability performance requirements of The Furniture and Furnishing (Fire ) (Safety) Regulations 1988 S.I No 1324 as amended, Schedule 4 Part 1 The Cigarette Test and Schedule 5 Part 1 The Match Test, using BS 5852: Part 1: 1979.

**Fibre Identification**

Reputed Fibre Composition: 100% cotton

**Pre-Treatment**

The sample was subjected to a water soak procedure as described in BS 5651:1978 Clause 4.5 and then line dried.

**Conditioning**

The sample was conditioned in an indoor ambient condition for at least 72 hours, then for at least 16 hours in an atmosphere having a temperature of  $20 \pm 5$  °C and a relative humidity of  $50 \pm 20\%$ .

**Comments of Test Results**

The sample supplied meets the flammability performance requirements of The Furniture and Furnishings (Fire) (Safety) Regulations 1988 S.I No 1324 as amended Schedule 4 Part 1 The Cigarette Test, when tested as stated in the results.

The sample supplied does not meet the flammability performance requirements of The Furniture and Furnishings (Fire) (Safety) Regulations 1988 S.I No 1324 as amended, Schedule 5 Part 1 The Match Test, due to flaming being greater than 120 seconds after the removal of the ignition source.

**Results**

'The following tests results relate only to the ignitability of the combination of materials under the particular conditions of test; they are not intended as a means of assessing the full potential fire hazard of the materials in use'

**The Cigarette Test**

Pass Criteria:

Two cigarettes are placed along the junction between the horizontal and vertical test pieces in accordance with Clause 9.2.2. No progressive smouldering or flaming is to be observed within 1 hour of placement of the cigarette (Clause 9.2.4).

This document is issued by the Company under its General Conditions of Service accessible at [www.sgs.com/terms\\_and\\_conditions.htm](http://www.sgs.com/terms_and_conditions.htm) and, for electronic format documents, subject to Terms and Conditions for Electronic Documents at <http://www.sgs.com/en/Terms-and-Conditions.aspx>. Attention is drawn to the limitation of liability, indemnification and jurisdiction issues defined therein. Any holder of this document is advised that information contained hereon reflects the Company's findings at the time of its intervention only and within the limits of Client's instructions, if any. The Company's sole responsibility is to its Client and this document does not exonerate parties to a transaction from exercising all their rights and obligations under the transaction documents. This document cannot be reproduced except in full, without prior written approval of the Company. Any unauthorized alteration, forgery or falsification of the content or appearance of this document is unlawful and offenders may be prosecuted to the fullest extent of the law." Unless otherwise stated the results shown in this test report refer only to the sample(s) tested and such sample(s) are retained for 90 days only

**Customer:** Pierre Frey SAS      **Test Report No:** 129615

The Cigarette Test		
	Cigarette 1	Cigarette 2
Smouldering Time of the Cigarette	21 min 42 sec	22 min 18sec
Clause 9.2.3 Evidence of Progressive Smouldering/ Flaming or Afterglow.	No	No
Cover Splitting	No	No
Clause 9.4 Any Internal Progressive Smouldering during the Final Examination	No	No
Test Result	Pass	Pass

**The Match Test**

**Pass Criteria:**

A butane flame is applied at the junction between the horizontal and vertical test pieces for a period 20 ± 1 second in accordance with clause 9.3.2. No Flaming or Progressive Smouldering is to be observed after 2 minutes of the removal of the burner tube (Clause 9.3.4).

	Match 1
Clause 9.3.4 Evidence of Flaming/ Progressive Smouldering/ Afterglow or Smoking	Yes (Flaming/ Progressive Smouldering/ Afterglow/ Smoking)
Cover Splitting	No
Clause 9.4 Any Internal Progressive Smouldering during the Final Examination	N/A
Test Result	Fail

Smouldering Cigarette test and the match test were carried out over Non-Fire Retardant Polyurethane Foam Density of 20-22 Kg per m<sup>3</sup>. The face of the fabric was tested.

Due to flaming for greater than 120 sec the sample was extinguished.

This document is issued by the Company under its General Conditions of Service accessible at [www.sgs.com/terms\\_and\\_conditions.htm](http://www.sgs.com/terms_and_conditions.htm) and, for electronic format documents, subject to Terms and Conditions for Electronic Documents at <http://www.sgs.com/en/Terms-and-Conditions.aspx>. Attention is drawn to the limitation of liability, indemnification and jurisdiction issues defined therein. Any holder of this document is advised that information contained hereon reflects the Company's findings at the time of its intervention only and within the limits of Client's instructions, if any. The Company's sole responsibility is to its Client and this document does not exonerate parties to a transaction from exercising all their rights and obligations under the transaction documents. This document cannot be reproduced except in full, without prior written approval of the Company. Any unauthorized alteration, forgery or falsification of the content or appearance of this document is unlawful and offenders may be prosecuted to the fullest extent of the law." Unless otherwise stated the results shown in this test report refer only to the sample(s) tested and such sample(s) are retained for 90 days only

**Customer:** Pierre Frey SAS      **Test Report No:** 129615

**BS 5852:2006: Clause 11: Ignition Source 5**

**Test Request**

The sample supplied is a woven fabric with pile and has been tested to BS 5852:2006 Clause 11 using Ignition Source 5.

**Fibre Identification**

Reputed Fibre Composition      100% Cotton

**Pre-Treatment**

The sample supplied was water soaked and dried in accordance to BS 5852:2006 Annex E

**Conditioning**

Before testing the sample was conditioned in an indoor ambient condition for 72 hours and in a standard atmosphere having a temperature of 23°C ± 2°C and a relative humidity of 50% r.h ± 5% for a minimum of 16hours.

**Comments on Test Results**

The sample supplied does not meet the requirements of BS 5852:2006 Clause 11, I/5 for the reason being the duration of flaming is greater than 10 minutes after the ignition of the crib.

The flame front has reached the lower margin either side and passed through the full thickness of the test specimen within the test duration.

**Results**

“The following test results relate only to the ignitability of combination of upholstery composites (BS 5852:2006 Clause 11) under the particular conditions of the test stated; they are not intended as a means of assessing the full potential fire hazard of the materials or products in use.”

**Ignition Source 5**

Pass Criteria: ~ Disregard flaming which ceases within 10 minutes. Smoke, heat or glowing which ceases within 60 minutes of igniting the crib.

*No smouldering is to be present in the final examination.*

Specimen Number	1	Time
Smoking	Y	>10 mins
Smouldering	N/A	-
Flaming	Y	>10 min
Afterglow	N/A	-
Flame front reaches extremities within the test duration (other than the top of vertical part)	N	N/A
Cover Split	Y	N/A
Final examination (ignition or Non-Ignition)	Ignition	

Please note that the fabric sample was tested over combustion-modified foam with a density of 35kg per M³.

Key: Y = Yes      N = No      N/A = Not Applicable

\*End of Report\*

This document is issued by the Company under its General Conditions of Service accessible at [www.sgs.com/terms\\_and\\_conditions.htm](http://www.sgs.com/terms_and_conditions.htm) and, for electronic format documents, subject to Terms and Conditions for Electronic Documents at <http://www.sgs.com/en/Terms-and-Conditions.aspx>. Attention is drawn to the limitation of liability, indemnification and jurisdiction issues defined therein. Any holder of this document is advised that information contained hereon reflects the Company's findings at the time of its intervention only and within the limits of Client's instructions, if any. The Company's sole responsibility is to its Client and this document does not exonerate parties to a transaction from exercising all their rights and obligations under the transaction documents. This document cannot be reproduced except in full, without prior written approval of the Company. Any unauthorized alteration, forgery or falsification of the content or appearance of this document is unlawful and offenders may be prosecuted to the fullest extent of the law.\* Unless otherwise stated the results shown in this test report refer only to the sample(s) tested and such sample(s) are retained for 90 days only