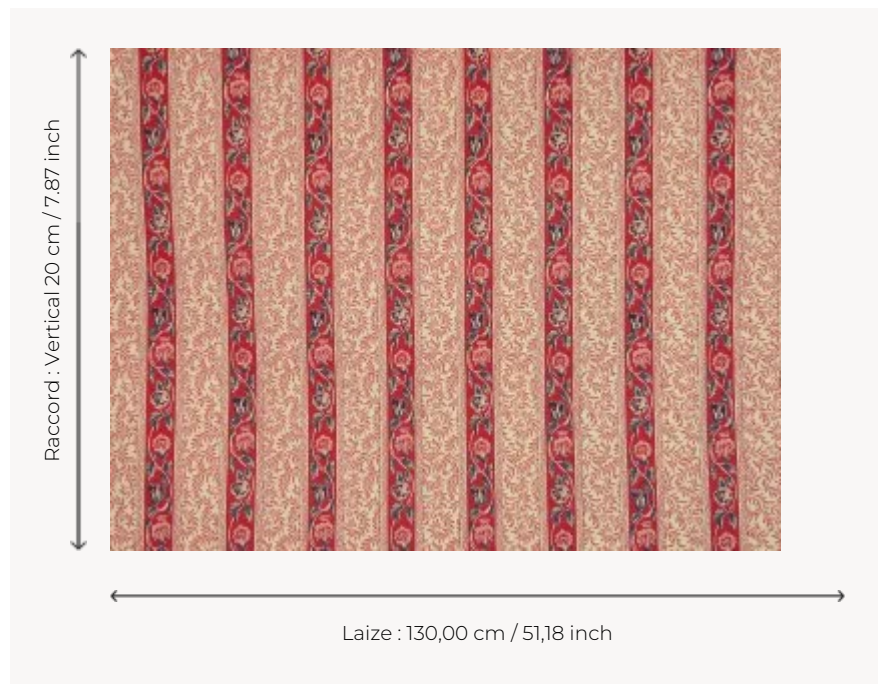


B081B001 LE GRAND CORAIL - RAYURE 14 CHEMINS

Finely striped variation of Le Grand Corail pattern for use as braid or all-over. The alternation of the vermiculated pattern and the floral stripe creates a rhythm of beautiful effect.

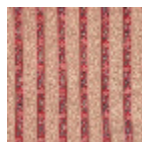
B081B001 - Rouge fond crème



Braquenié

TYPE	Prints
COMPOSITION	100 % Cotton
SALES UNIT	Available per meter/yard
WIDTH	130 cm / 51,18 inch
REPEAT	V: 20 cm - 7,87 inch
WEIGHT	180 gr / ml
CARE	
NOTES	Made in France (EPV Living Heritage Mill)

2 Colors



B081B001
Rouge fond
crème

B081B002
Rayure
chemins
rougefond